

Portland Public Schools
 October 1, 2015 Enrollment - Summary Comparison

Enrollment by Program Type	2013	2014	2015	Change
Elementary Schools	27051	27015	27159	144
Middle Schools	5559	5680	5911	231
High Schools	10585	10807	11183	376
Selected Focus/Alternative Programs	1699	1716	1817	101
Community Based Programs	1055	1034	964	-70
Special Services	485	443	451	8
Public Charter Schools	1664	1764	1590	-174
Total Enrollment	48098	48459	49075	616

Enrollment by Grade	2013	2014	2015	Change
Pre-Kindergarten	971	880	923	43
Kindergarten	4244	4127	4097	-30
Grade 1	4369	4302	4266	-36
Grade 2	4082	4287	4256	-31
Grade 3	3864	4041	4233	192
Grade 4	3906	3864	3983	119
Grade 5	3775	3865	3772	-93
Grade 6	3547	3594	3722	128
Grade 7	3407	3428	3601	173
Grade 8	3349	3349	3424	75
Grade 9	3057	3137	3259	122
Grade 10	3055	3090	3131	41
Grade 11	2990	2946	2981	35
Grade 12	3482	3549	3427	-122
Pre-K - 12 Totals	48098	48459	49075	616
K - 12 Totals	47127	47579	48152	573

Enrollment by Ethnicity / Race	2013	2014	2015	Change
Asian	7.9%	7.8%	7.3%	-0.5%
African American	10.7%	10.3%	10.0%	-0.3%
Hispanic	16.2%	16.2%	16.2%	0.0%
Native American	1.1%	0.9%	0.9%	0.0%
Pacific Islander	0.9%	0.8%	0.8%	0.0%
White	55.8%	55.9%	55.9%	0.0%
Multiple Ethnicities Specified	7.4%	8.0%	8.9%	0.9%
	100.0%	100.0%	100.0%	

October 2015 Enrollment Summaries are based on enrollment on 10/1/2015 as reported in the Period 1 Cumulative Average Daily Membership State Report.

Students receiving Special Education services only who are not regularly attending, but are in the student information system (SIS), are excluded from the enrollment summaries.

Portland Public Schools

Enrollment Summary by Program Type, School and Year

2006-07 through 2015-16

Program Type	2006-07	2007-08	2008-09	2009-10	2010-11	2011-12	2012-13	2013-14	2014-15	2015-16	2-Year Change (2015-16 - 2014-15)		5-Year Change (2015-16 - 2011-12)		10-Year Change (2015-16 - 2006-07)	
											#	%	#	%	#	%
Elementary Schools	22,786	24,404	25,124	25,629	25,874	26,445	26,577	27,051	27,015	27,159	144	0.5	714	2.7	2,755	11.3
Middle Schools	7,507	5,665	5,252	5,211	5,142	5,160	5,365	5,559	5,680	5,911	231	4.1	751	14.6	246	4.3
High Schools	11,950	11,629	11,033	11,034	10,978	10,810	10,551	10,585	10,807	11,183	376	3.5	373	3.5	-446	-3.8
Subtotal - Elementary, Middle and High Schools	42,243	41,698	41,409	41,874	41,994	42,415	42,493	43,195	43,502	44,253	751	1.7	1,838	4.3	2555	6.1
Alternative Programs	1,430	1,432	1,587	1,642	1,663	1,689	1,739	1,699	1,716	1,817	101	5.9	128	7.6	385	26.9
Subtotal - Schools and Alternative Programs	43,673	43,130	42,996	43,516	43,657	44,104	44,232	44,894	45,218	46,070	852	1.9	1,966	4.5	2940	6.8
Community-Based Alternative Programs	1,303	1,342	1,282	1,206	1,275	1,150	1,207	1,055	1,034	964	-70	-6.8	-186	-16.2	-378	-28.2
Special Services	548	539	522	500	385	502	457	485	443	451	8	1.8	-51	-10.2	-88	-16.3
Public Charter Schools	824	1,077	1,246	1,374	1,486	1,532	1,627	1,664	1,764	1,590	-174	-9.9	58	3.8	513	47.6
Grand Total	46,348	46,088	46,046	46,596	46,803	47,288	47,523	48,098	48,459	49,075	616	1.3	1,787	3.8	2,987	6.5

October 2015 Enrollment Summaries are based on enrollment on 10/1/2015 as reported in the Period 1 Cumulative Average Daily Membership State Report.

Students receiving Special Education services only who are not regularly attending, but are in the student information system (SIS), are excluded from the enrollment summaries.

Program type (i.e., elementary, middle, high, etc.) reflects the most recent administrative assignment. In recent years enrollment counts are compiled on or about the first of October. An enrolled student is defined as a student who attends one or more schools or programs within the District. Regardless of the number of schools or programs attended, each student is counted only once; the counts are unduplicated. Schools and programs that are no longer in operation are designated as "closed."

Portland Public Schools
 Enrollment Summary by Program Type, School and Year
 2006-07 through 2015-16

Program Type	Footnotes	Grade Range											2-Year Change (2015-16 - 2014-15)		5-Year Change (2015-16 - 2011-12)		10-Year Change (2015-16 - 2006-07)	
			2006 -07	2007 -08	2008 -09	2009 -10	2010 -11	2011 -12	2012 -13	2013 -14	2014 -15	2015 -16	#	%	#	%	#	%
School																		
ELEMENTARY, MIDDLE AND HIGH SCHOOLS																		
Abernethy	(19)	KG-5	357	342	349	392	421	455	505	528	511	513	2	0.4	58	12.7	171	50.0
Ainsworth		KG-5	509	493	520	528	551	568	569	576	582	600	18	3.1	32	5.6	107	21.7
Alameda		KG-5	678	697	717	744	774	782	769	773	760	730	-30	-3.9	-52	-6.6	33	4.7
Arleta	(13)	KG-8	370	387	420	420	428	422	462	476	454	456	2	0.4	34	8.1	69	17.8
Astor	(13)	KG-8	331	381	438	458	445	482	478	500	497	493	-4	-0.8	11	2.3	112	29.4
Atkinson		KG-5	549	524	535	491	484	447	440	441	428	435	7	1.6	-12	-2.7	-89	-17.0
Beach	(13)	K-8	412	426	484	538	561	582	613	620	607	631	24	4.0	49	8.4	205	48.1
Beverly Cleary	(2,11,13)	KG-8		578	557	552	604	674	730	814	834	859	25	3.0	185	27.4	281	48.6
Beverly Cleary @ Hollyrood			210															
Boise-Eliot	(2,13)	KG-8	415	412	423	417	390	389										
Boise-Eliot/Humboldt	(2,13)	PK-8							535	506	540	540	0					
Bridger	(8,13)	KG-8	421	470	320	331	365	396	405	435	415	476	61	14.7	80	20.2	6	1.3
Bridlemile		KG-5	458	468	464	480	463	472	457	450	442	480	38	8.6	8	1.7	12	2.6
Buckman		KG-5	506	481	498	492	497	488	460	452	444	481	37	8.3	-7	-1.4	0	
Capitol Hill	(19)	KG-5	341	354	321	357	351	371	403	405	460	437	-23	-5.0	66	17.8	83	23.4
Chapman		KG-5	478	476	532	544	522	562	592	646	674	643	-31	-4.6	81	14.4	167	35.1
Chief Joseph	(1,19)	PK-5	359	361	370	377	408	481	459			Merged						
Chief Joseph/Ockley Green	(1)	KG-8								642	627	604	-23	-3.7				
César Chávez	(7,11,13)	KG-8	401	587	499	484	477	453	473	483	451	522	71	15.7	69	15.2	-65	-11.1
Creative Science School Program	(8,13)	KG-8			260	301	305	356	388	425	444	476	32	7.2	120	33.7		
Creston	(13)	KG-8	309	335	365	333	345	380	345	350	350	392	42	12.0	12	3.2	57	17.0
Duniway		KG-5	446	426	411	423	442	425	423	437	505	494	-11	-2.2	69	16.2	68	16.0
Faubion	(13)	PK-8	332	355	396	393	401	434	454	487	511	479	-32	-6.3	45	10.4	124	34.9
Forest Park		KG-5	508	502	512	501	507	491	502	490	486	449	-37	-7.6	-42	-8.6	-53	-10.6
Glencoe	(19)	KG-5	498	506	499	474	480	453	472	502	503	500	-3	-0.6	47	10.4	-6	-1.2
Grout	(23)	KG-5	333	349	339	346	361	359	371	377	389	376	-13	-3.3	17	4.7	27	7.7
Harrison Park	(8,13)	KG-8	508	507	719	732	751	751	757	742	742	729	-13	-1.8	-22	-2.9	222	43.8
Hayhurst	(20)	KG-8	345	329	351	385	396	420	412	415	484	499	15	3.1	79	18.8	170	51.7
Hayhurst		KG-5		144	143	158	165	185	172	182	256	277	21	8.2	92	49.7	133	92.4
Odyssey		KG-8		185	208	227	231	235	240	233	228	222	-6	-2.6	-13	-5.5	37	20.0
Humboldt	(2,13)		240	235	258	275	230	219				Closed						
Irvington	(13)	KG-8	473	505	503	505	529	483	460	478	484	493	9	1.9	10	2.1	-12	-2.4
James John		KG-5	459	430	404	384	394	402	439	461	445	429	-16	-3.6	27	6.7	-1	-0.2
Kelly		KG-5	439	464	468	467	509	570	626	622	636	610	-26	-4.1	40	7.0	146	31.5
King	(13)	PK-8	458	453	399	336	288	292	312	331	370	400	30	8.1	108	37.0	-53	-11.7
Laurelhurst	(13)	KG-8	561	536	606	708	704	684	665	673	671	691	20	3.0	7	1.0	155	28.9
Lee	(13)	KG-8	354	367	434	458	457	459	497	493	431	456	25	5.8	-3	-0.7	89	24.3
Lent	(13)	KG-8	400	475	528	549	561	577	573	604	560	564	4	0.7	-13	-2.3	89	18.7
Lewis		KG-5	293	310	349	374	396	393	400	414	382	382	0		-11	-2.8	72	23.2

Portland Public Schools
 Enrollment Summary by Program Type, School and Year
 2006-07 through 2015-16

Program Type	Footnotes	Grade Range											2-Year Change (2015-16 - 2014-15)		5-Year Change (2015-16 - 2011-12)		10-Year Change (2015-16 - 2006-07)		
			2006 -07	2007 -08	2008 -09	2009 -10	2010 -11	2011 -12	2012 -13	2013 -14	2014 -15	2015 -16	#	%	#	%	#	%	
School																			
Llewellyn		KG-5	309	341	396	434	485	543	583	570	518	531	13	2.5	-12	-2.2	190	55.7	
Maplewood	(19)	KG-5	307	308	331	342	350	335	327	333	329	359	30	9.1	24	7.2	51	16.6	
Markham	(19)	KG-5	359	349	360	376	376	384	383	393	386	377	-9	-2.3	-7	-1.8	28	8.0	
Marysville	(13)	KG-8	368	407	437	435	404	363	352	416	405	390	-15	-3.7	27	7.4	-17	-4.2	
Ockley Green	(1,17)	KG-8	442	389	337	299	310	269	243	Merged with Chief Joseph									
Peninsula	(13)	KG-8	299	326	370	375	361	358	368	376	396	374	-22	-5.6	16	4.5	48	14.7	
Richmond	(19)	K-8	360	436	505	569	612	662	662	687	677	629	-48	-7.1	-33	-5.0	193	44.3	
Rieke		KG-5	280	322	348	371	356	416	388	388	388	402	14	3.6	-14	-3.4	80	24.8	
Rigler	(6,10,13)	KG-5	538	562	525	596	588	524	449	463	480	451	-29	-6.0	-73	-13.9	-111	-19.8	
Rosa Parks		K-5	435	562	503	463	434	407	405	405	341	329	-12	-3.5	-78	-19.2	-233	-41.5	
Roseway Heights	(11,13)	KG-8	406	660	565	578	551	589	616	606	668	697	29	4.3	108	18.3	37	5.6	
Sabin	(9,13)	K-8	432	451	363	348	362	392	420	485	514	568	54	10.5	176	44.9	117	25.9	
Scott	(10,13)	KG-8	440	539	530	563	533	521	504	507	481	473	-8	-1.7	-48	-9.2	-66	-12.2	
Sitton		KG-5	285	315	309	291	307	333	356	376	399	390	-9	-2.3	57	17.1	75	23.8	
Skyline	(13)	KG-8	233	258	266	294	281	276	273	265	309	300	-9	-2.9	24	8.7	42	16.3	
Stephenson		KG-5	310	320	327	335	324	335	329	320	308	322	14	4.5	-13	-3.9	2	0.6	
Sunnyside Environmental	(20)	KG-8	501	542	565	585	580	608	605	587	586	574	-12	-2.0	-34	-5.6	32	5.9	
Vernon	(6,13)	K-8	404	453	394	397	376	500	440	394	386	407	21	5.4	-93	-18.6	-46	-10.2	
Vestal	(13)	KG-8	343	389	428	433	451	420	395	402	399	412	13	3.3	-8	-1.9	23	5.9	
Whitman		KG-5	384	370	369	372	347	361	351	349	316	271	-45	-14.2	-90	-24.9	-99	-26.8	
Winterhaven		KG-8	344	335	345	345	352	346	352	356	346	350	4	1.2	4	1.2	15	4.5	
Woodlawn	(13,19)	PK-8	450	424	462	449	478	443	439	449	443	426	-17	-3.8	-17	-3.8	2	0.5	
Woodmere		KG-5	422	418	398	397	393	397	383	371	338	312	-26	-7.7	-85	-21.4	-106	-25.4	
Woodstock		KG-5	384	407	443	433	466	491	508	505	487	496	9	1.8	5	1.0	89	21.9	
Elementary Schools Subtotal			22,786	24,404	25,124	25,629	25,874	26,445	26,577	27,051	27,015	27,159	144	0.5	714	2.7	2,755	11.3	

Portland Public Schools
 Enrollment Summary by Program Type, School and Year
 2006-07 through 2015-16

Program Type	Footnotes	Grade Range											2-Year Change (2015-16 - 2014-15)		5-Year Change (2015-16 - 2011-12)		10-Year Change (2015-16 - 2006-07)	
			2006 -07	2007 -08	2008 -09	2009 -10	2010 -11	2011 -12	2012 -13	2013 -14	2014 -15	2015 -16	#	%	#	%	#	%
School																		
Beaumont		6-8	500	460	458	450	455	481	583	584	554	571	17	3.1	90	18.7	111	24.1
Binnsmead	(8)		484	346								Closed						
da Vinci		6-8	444	458	445	456	464	462	470	468	465	458	-7	-1.5	-4	-0.9	0	
Fernwood	(11)		347									Closed						
George		6-8	383	328	375	388	364	360	385	373	359	369	10	2.8	9	2.5	41	12.5
Gray		6-8	457	421	420	419	428	422	422	464	527	566	39	7.4	144	34.1	145	34.4
Gregory Heights	(11)		471									Closed						
Hosford		6-8	476	516	531	548	547	534	538	576	591	640	49	8.3	106	19.9	124	24.0
Jackson		6-8	688	714	712	651	584	533	532	533	548	606	58	10.6	73	13.7	-108	-15.1
Kellogg	(12)		269									Closed						
Lane		6-8	527	489	419	397	398	441	486	505	471	481	10	2.1	40	9.1	-8	-1.6
Mt. Tabor		6-8	633	588	555	559	579	593	606	628	662	694	32	4.8	101	17.0	106	18.0
Portsmouth	(11)		286									Closed						
Sellwood		6-8	515	459	474	480	474	486	455	483	545	560	15	2.8	74	15.2	101	22.0
Tubman	(12)		131									Closed						
West Sylvan		6-8	896	886	863	863	849	848	888	945	958	966	8	0.8	118	13.9	80	9.0
Middle Schools Subtotal			7,507	5,665	5,252	5,211	5,142	5,160	5,365	5,559	5,680	5,911	231	4.1	751	14.6	246	4.3

Portland Public Schools
 Enrollment Summary by Program Type, School and Year
 2006-07 through 2015-16

Program Type	Footnotes	Grade Range											2-Year Change (2015-16 - 2014-15)		5-Year Change (2015-16 - 2011-12)		10-Year Change (2015-16 - 2006-07)	
			2006 -07	2007 -08	2008 -09	2009 -10	2010 -11	2011 -12	2012 -13	2013 -14	2014 -15	2015 -16	#	%	#	%	#	%
School																		
Benson		9-12	1,294	1,218	1,134	1,100	986	889	889	830	879	914	35	4.0	25	2.8	-304	-25.0
Cleveland		9-12	1,472	1,528	1,516	1,553	1,570	1,520	1,532	1,523	1,516	1,600	84	5.5	80	5.3	72	4.7
Franklin	(12)	9-12	1,283	1,233	1,007	1,032	1,036	1,480	1,469	1,460	1,552	1,570	18	1.2	90	6.1	337	27.3
Grant	(5)	9-12	1,691	1,642	1,553	1,610	1,620	1,565	1,536	1,486	1,503	1,481	-22	-1.5	-84	-5.4	-161	-9.8
Jefferson	(5,12)	9-12	566	707	631	617	621	584	441	511	493	524	31	6.3	-60	-10.3	-183	-25.9
Academy of Arts & Tech	(15)			263								Closed						
Academy of Science & Tech	(15)			228								Closed						
Jefferson					448	435	415	413	441	511	493	524	31	6.3	111	26.9		
Young Men's Academy				57	29							Closed						
Young Women's Academy	(3,12)	9-12		159	154	182	206	171				Closed						
Lincoln		9-12	1,498	1,404	1,335	1,395	1,410	1,476	1,513	1,565	1,583	1,696	113	7.1	220	14.9	292	20.8
Madison	(5)	8-12	936	859	900	860	910	1,161	1,107	1,066	1,077	1,134	57	5.3	-27	-2.3	275	32.0
H Community	(15)	9-12		289	250													
M Community	(15)	9-12		291	301													
S Community	(15)	9-12		279	262													
Madison - Campus	(15)				2													
Madison 8th Grade Academy	(10)				85							Closed						
Marshall Campus	(4)	9-12	860	775	774	747	707					Closed						
BizTech High	(4)	9-12	292	262	279	284	280					Closed						
Pauling Academy of Integrated Sciences	(4,18)	9-12	254	219	186	175	169					Closed						
Marshall Night Program	(16)								See Alliance High School									
Renaissance Arts Academy	(4)	9-12	314	294	309	288	258					Closed						
Roosevelt Campus	(5)	9-12	794	730	703	681	683	748	828	914	947	940	-7	-0.7	192	25.7	210	28.8
A.C.T. School	(5)	9-12	288	279	257	273	265	251				Closed						
P.O.W.E.R. School	(5)	9-12	289	229	221	209	237	252				Closed						
Spanish-English International	(5)	9-12	217	222	225	199	181	245				Closed						
Wilson		9-12	1,556	1,533	1,480	1,439	1,435	1,387	1,236	1,230	1,257	1,324	67	5.3	-63	-4.5	-209	-13.6
High Schools Subtotal			11,950	11,629	11,033	11,034	10,978	10,810	10,551	10,585	10,807	11,183	376	3.5	373	3.5	-446	-3.8
Elementary, Middle and High Schools Subtotal			42,243	41,698	41,409	41,874	41,994	42,415	42,493	43,195	43,502	44,253	751	1.7	1,838	4.3	2,555	6.1

Portland Public Schools
 Enrollment Summary by Program Type, School and Year
 2006-07 through 2015-16

Program Type	Footnotes	Grade Range											2-Year Change (2015-16 - 2014-15)		5-Year Change (2015-16 - 2011-12)		10-Year Change (2015-16 - 2006-07)		
			2006 -07	2007 -08	2008 -09	2009 -10	2010 -11	2011 -12	2012 -13	2013 -14	2014 -15	2015 -16	#	%	#	%	#	%	
School																			
PPS ALTERNATIVE PROGRAMS																			
ACCESS Program	(9)	1-8			159	200	196	198	219	236	305	346	41	13.4	148	74.7			
Alliance High School	(16)	9-12	366	292	288	267	221	233	222	183	172	178	6	3.5	-55	-23.6	-114	-39.0	
Madison Campus		11-12		59	55	42	36	18				Closed							
Marshall Night Program		11-12		46	59	39	32					Merged							
Meek Campus		9-12		140	123	148	111	138	148	121	112	106	-6	-5.4	-32	-23.2	-34	-24.3	
Benson Campus		10-12		47	51	38	42	77	74	62	60	72	12	20.0	-5	-6.5	25	53.2	
Clarendon Early Learning Center												16	16	0					
Head Start Early Childhood Education		PK	606	674	696	732	804	790	824	808	739	799	60	8.1	9	1.1	125	18.5	
Meek Professional Technical H.S.	(16)																		
Metropolitan Learning Center		KG-12	439	444	424	443	440	447	455	440	436	426	-10	-2.3	-21	-4.7	-18	-4.1	
Native Montessori Program		PK	9	22	20														
Portland Evening H.S. at Benson		11-12	10									5							
Portland International Scholars Academy										10	31	22	-9	-29.0					
Portland Night H.S. at Grant	(16)																		
Ramona Early Childhood		PK						17	10	10	2	1	-1	-50.0	-16	-94.1			
Reconnection Center		9-12							5	5	10	28	18	180.0					
Teen Parent Program						2	4	4	4	7	5	1	-4	-80.0	-3	-75.0			
Alternative Programs Subtotal			1,430	1,432	1,587	1,642	1,663	1,689	1,739	1,699	1,716	1,817	101	5.9	128	7.6	385	26.9	
School and Alternative Programs Subtotal			43,673	43,130	42,996	43,516	43,657	44,104	44,232	44,894	45,218	46,070	852	1.9	1,966	4.5	2,940	6.8	

Portland Public Schools
 Enrollment Summary by Program Type, School and Year
 2006-07 through 2015-16

Program Type	Footnotes	Grade Range											2-Year Change (2015-16 - 2014-15)		5-Year Change (2015-16 - 2011-12)		10-Year Change (2015-16 - 2006-07)	
			2006 -07	2007 -08	2008 -09	2009 -10	2010 -11	2011 -12	2012 -13	2013 -14	2014 -15	2015 -16	#	%	#	%	#	%
School																		
COMMUNITY-BASED ALTERNATIVE PROGRAMS																		
Albina Youth Opportunity School		10-12	47	54	54	52	39					Closed						
DePaul Center		9-12	18	20	27	35	28	27	18	21	21	22	1	4.8	-5	-18.5	2	10.0
Insite On-line Alternative						10	12					Closed						
LISTOS	(15)	9-12	73	75								Closed						
Mt. Scott Park Center for Learning		6-12	89	115	43	120	24	18	17									
Mt. Scott Park Center for Learning H.S.		10-12			72		88	113	117	126	145	145	0		32	28.3		
NAYA Early College Academy		9-12		38	79	81	93	92	100	92	97	70	-27	-27.8	-22	-23.9	32	84.2
New Avenues for Youth		9-12	26	21	26	22	22	23	35	13	14	13	-1	-7.1	-10	-43.5	-8	-38.1
Open Meadow / CRUE		10-12	45	43	48													
Open Meadow H.S.		9-12	85	90	94	131	129	121	118	122	43	Closed						
Open Meadow M.S.		6-8	55	45	46	56	47	60	58	50	46	41	-5	-10.9	-19	-31.7	-4	-8.9
Oregon Outreach Inc The Gladys McCoy Academy		9-12	14	18	19	22	21											
Outside In		12	6	12	18	12	14	12	19	24	15	20	5	33.3	8	66.7	8	66.7
P.C.C. Bilingual		9-12	186	141	116	93	89	69	58	32		Closed						
P.C.C. G.E.D.		9-12	122	137	126	165	136	157	170	157		Closed						
P.C.C. YES!		9-12									238	183	-55	-23.1				
P.C.C. H.S. Completion		9-12	176	164	141	52	177	194	184	165	174	177	3	1.7	-17	-8.8	13	7.9
P.I.C. Night School		11-12	17	2	5	5	5					Closed						
P.O.I.C.		9-12	93	112	101	98	108											
P.O.I.C. Rosemary Anderson H.S.		9-12			18	23	33	132	148	131	146	215	69	47.3	83	62.9		
Pacific Crest Community School		12	7	4	2													
Pathfinders Academy		9-12	5	8	13	16	13	14	15	12		Closed						
Portland International Community		10-12	35	34	27	22	15											
Quest Schools		9-12	81	77	90	71	72					Closed						
SE Works Community Learning Center		11-12	13	19	16	15	19	17	18	20	33	14	-19	-57.6	-3	-17.6	-5	-26.3
Y.E.I. Teen Parent		9-12	32	14	26	18	12				See Youth Employment Institute							
Youth Employment Institute		10-12	43	41	36	37	33	51	49	40		Closed						
Youth Progress Association		9-12	20	28	14	25	21	31	40	25	39	32	-7	-17.9	1	3.2	4	14.3
YouthBuilders		12	15	30	25	25	25	19	43	25	24	32	8	33.3	13	68.4	2	6.7
Community-Based Alternative Programs Subtotal			1,303	1,342	1,282	1,206	1,275	1,150	1,207	1,055	1,034	964	-70	-6.8	-186	-16.2	-378	-28.2

Portland Public Schools
 Enrollment Summary by Program Type, School and Year
 2006-07 through 2015-16

Program Type	Footnotes	Grade Range											2-Year Change (2015-16 - 2014-15)		5-Year Change (2015-16 - 2011-12)		10-Year Change (2015-16 - 2006-07)		
			2006 -07	2007 -08	2008 -09	2009 -10	2010 -11	2011 -12	2012 -13	2013 -14	2014 -15	2015 -16	#	%	#	%	#	%	
School																			
SPECIAL SERVICES	(22)																		
C.T.C. Jefferson H.S.	(15)	12	21	22	27	24													
C.T.C. Humboldt																			
C.T.C. P.S.U.	(15)	12	17	17	17	19													
C.T.C. Roosevelt	(15)	12			20	26													
C.T.C. Northeast		12					57	66	69	63	75	30	-45	-60.0	-36	-54.5			
C.T.C. Southeast		10-12	92	59	41	75	10	104	81	84	72	63	-9	-12.5	-41	-39.4	4	6.8	
Clinton Street School	(14)	8-12	32	19	14	23	18	20	11	10	13	10	-3	-23.1	-10	-50.0	-9	-47.4	
Edgefield Center	(14)	1-6			11														
Home Instruction	(15)	9		1	1														
Home Schoolers	(15)	12			2														
John's Landing School	(14)	8-12	23	18	13	8	11	13	11	18	17	12	-5	-29.4	-1	-7.7	-6	-33.3	
Morrison Breakthrough	(14)	9-12	19	19	16	20	18	14	17	15	16	5	-11	-68.8	-9	-64.3	-14	-73.7	
Morrison Hand in Hand	(14)	PK-2	21	21	17	29	21	20	20	21	20	12	-8	-40.0	-8	-40.0	-9	-42.9	
Nickerson Adolescent D.T.	(14)	7-11	12	23	10	17	11	6	8	8	11	8	-3	-27.3	2	33.3	-15	-65.2	
Park Academy	(14)	2-11							1	2	2	1	-1	-50.0					
Parry Center	(14)	2-11	27	39	11	29	41	62	48	57	58	55	-3	-5.2	-7	-11.3	16	41.0	
Parry Center SCIP	(14)	2-11			8	7	12	10	15	10	14	11	-3	-21.4	1	10.0			
Part-time Home/Private	(15)	KG-11		10	14														
Pioneer Programs	(21)	KG-12	179	199	218	172	129	146	135	121	119	133	14	11.8	-13	-8.9	-66	-33.2	
Annex	(21)	6-12		54	69	49	27	55	53	49		Closed							
Columbia	(21)	8-12		48	57	35	14	12				Closed							
Holladay Center	(21)	KG-5		50	46	45	44	37	37	34	40	51	11	27.5	14	37.8	1	2.0	
Pioneer Annex 9-12	(21)	9-12									44	41	-3	-6.8					
Youngson	(21)	3-9		47	46	43	44	42	45	38	35	41	6	17.1	-1	-2.4	-6	-12.8	
Pioneer CTC	(14)	12	21	24	16		3												
Columbia Transitional School	(15)	12		20	16														
Pioneer - Interim Alt Ed				4			3												
Providence Hospital		11-12	10	2	2		1			12	7	7	0				5	250.0	
Rosemont	(14)	8-12	47	46	41	25	26	24	25	26		Closed							
SAGE												1							
S.E.R.P.	(15)								1	1									
Serendipity	(15)									4		2							
Special Education Out-of-District							8			18									
Special Education KG Transition												26							
Victory Academy	(15)								1	1		1							
Waverly Children's Home	(15)		8																
White Shield	(14)	7-12	19	20	14	17	11	9	7	5	11	10	-1	-9.1	1	11.1	-10	-50.0	
Wildflowers	(14)	7-12			9	9	8	8	7	9	8	11	3	37.5	3	37.5			
Special Services Subtotal			548	539	522	500	385	502	457	485	443	451	8	1.8	-51	-10.2	-88	-16.3	

Portland Public Schools
 Enrollment Summary by Program Type, School and Year
 2006-07 through 2015-16

Program Type	Footnotes	Grade Range											2-Year Change (2015-16 - 2014-15)		5-Year Change (2015-16 - 2011-12)		10-Year Change (2015-16 - 2006-07)	
			2006 -07	2007 -08	2008 -09	2009 -10	2010 -11	2011 -12	2012 -13	2013 -14	2014 -15	2015 -16	#	%	#	%	#	%
School																		
PUBLIC CHARTER SCHOOLS																		
Arthur Academy		KG-5	91	117	137	143	138	159	159	153	175	171	-4	-2.3	12	7.5	54	46.2
CM2's Opal School		KG-5	75	76	75	80	80	88	88	87	88	88	0		0		12	15.8
Emerson Public Charter		KG-5	126	131	129	143	146	139	144	144	142	144	2	1.4	5	3.6	13	9.9
KairosPDX		KG-2									47	67	20	42.6				
Le Monde		KG-4							95	144	166	226	60	36.1				
Leadership and Entrepreneurship Public Charter High School	(24)	9-12	102	147	217	274	311	330	273	271	227	Closed						
Portland Village School		KG-8		155	209	264	317	352	386	394	413	416	3	0.7	64	18.2	261	168.4
		KG-5										288						
		6-8										128						
Self Enhancement Academy		6-8	134	137	142	128	135	118	133	128	135	122	-13	-9.6	4	3.4	-15	-10.9
Trillium Public Charter		KG-12	296	314	337	342	359	346	349	343	371	356	-15	-4.0	10	2.9	42	13.4
		KG-8										262						
		9-12										94						
Public Charter Schools Subtotal			824	1,077	1,246	1,374	1,486	1,532	1,627	1,664	1,764	1,590	-174	-9.9	58	3.8	513	47.6
Total			46,348	46,088	46,046	46,596	46,803	47,288	47,523	48,098	48,459	49,075	616	1	1,787	3.8	2,987	6.5

October 2015 Enrollment Summaries are based on enrollment on 10/1/2015 as reported in the Period 1 Cumulative Average Daily Membership State Report. Students receiving Special Education services only who are not regularly attending, but are in the student information system (SIS), are excluded from the enrollment summaries.

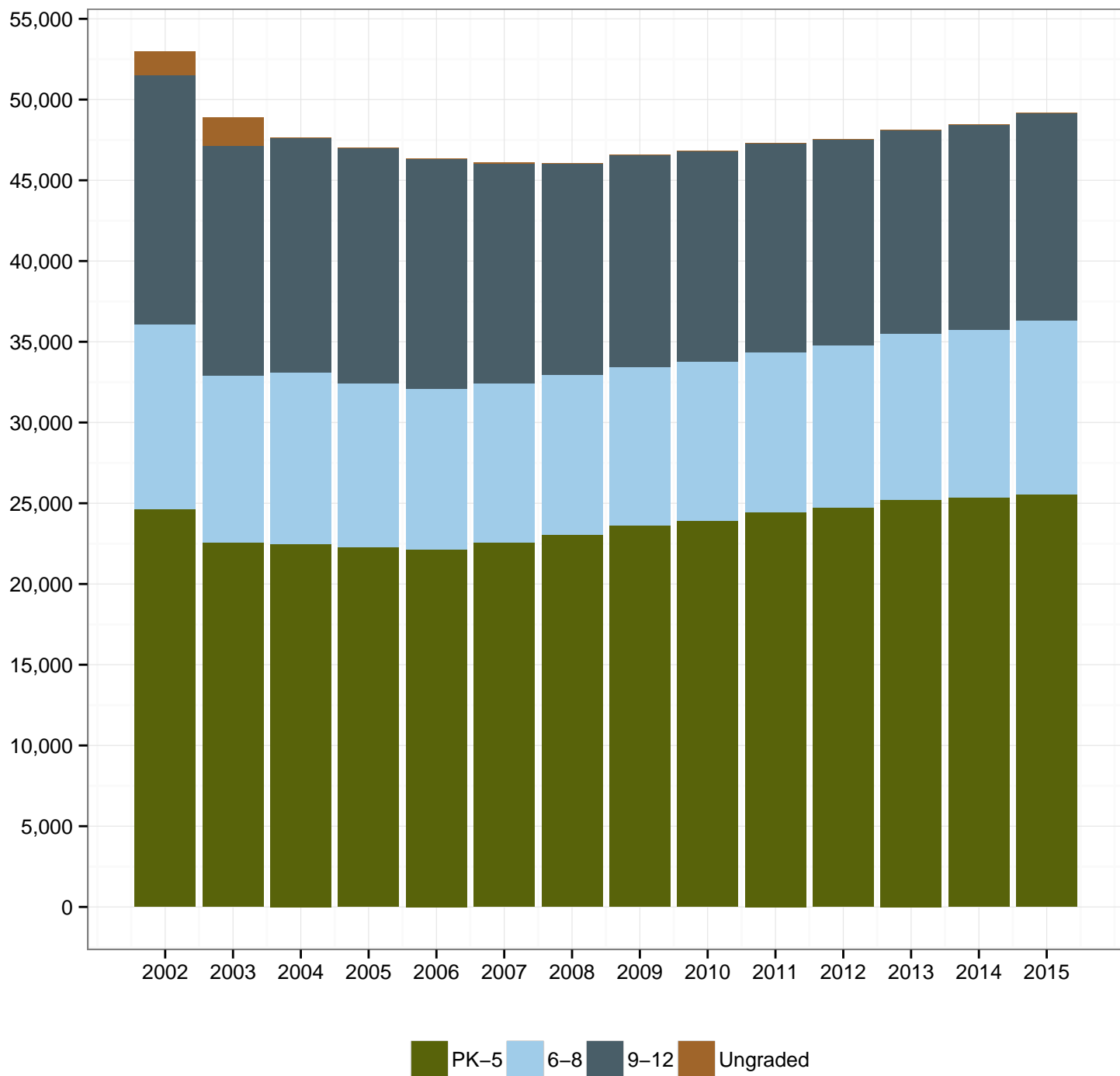
Program type (i.e., elementary, middle, high, etc.) reflects the most recent administrative assignment. In recent years enrollment counts are compiled on or about the first of October. An enrolled student is defined as a student who attends one or more schools or programs within the District. Regardless of the number of schools or programs attended, each student is counted only once; the counts are unduplicated. Schools and programs that are no longer in operation are designated as "closed."

Enrollment Report Footnotes

- (1) Effective 2013-14, Chief Joseph and Ockley Green merged to form Chief Joseph/Ockley Green K-8.
- (2) Effective 2012-13, Humboldt closed. Students from Humboldt neighborhood now attend Boise-Eliot/Humboldt.
- (3) Effective 2012-13, Young Women's Leadership Academy closed.
- (4) Effective 2011-12, Marshall closed. Students in the Harrison Park K-8 School area attend Madison High School. Students in the Kelly and Woodmere Elementary School areas, and the Bridger, Lent and Marysville K-8 areas, attend Franklin High School. Students in the Whitman Elementary School area attend Cleveland High School.
- (5) Effective 2011-12, students in the Jefferson cluster have the choice to attend either the new Jefferson Middle College program or a neighborhood comprehensive high school program at Roosevelt, Madison or Grant, depending on where they live within the Jefferson cluster boundaries.
- (6) For the 2011-12 school year, Rigler neighborhood 7th and 8th graders attended Vernon.
- (7) Effective 2010-11, Clarendon-Portsmouth was renamed César Chávez.
- (8) Effective 2008-09, Binnsmead closed and the Clark School students and staff moved from the Clark site to the Binnsmead site. The school was renamed Harrison Park. The Creative Science School Program (CSSP) expanded and moved from Bridger Elementary to the Clark site.
- (9) ACCESS is a district-wide alternative education program. Starting in 2013-14, it is located at the Rose City Park site.
- (10) In 2009-10 Scott and Rigler became K-8 schools. Effective 2008-09, Scott and Rigler remained K-7 schools, and those students that matriculated from 7th to 8th grade attended at the Madison 8th grade academy.
- (11) Effective 2007-08, Clarendon ES and Portsmouth MS merged to form a K-8 school. Enrollment counts for years prior to 2007-08 for Clarendon consist of grades K-5 only. Enrollment counts for Portsmouth prior to 2007-08 are contained in the MS section of this report. Similarly, Hollyrood ES and Fernwood MS merged to form a K-8 school (renamed Beverly Cleary) as did Rose City Park ES and Gregory Heights MS (renamed Roseway Heights).
- (12) Effective 2007-08, Kellogg MS was closed. Eighth grade students that would have been enrolled at Kellogg for the 2007-08 school year were enrolled at Franklin HS. Tubman MS was also closed and a new Young Women's Academy was opened on the Tubman campus as part of Jefferson High School.
- (13) Transitioned to K-8. In 2009-10 Laurelhurst, Rigler, Scott became K-8 schools. In 2008-09 Arleta, Astor, Boise-Eliot, Bridger, Clark, Creston, Faubion, Humboldt, Irvington, Lee, Lent, Marysville, Peninsula, Sabin, Skyline, Vestal, Woodlawn became K-8 schools. In 2007-08 Beach, Clarendon-Portsmouth, Beverly Cleary, King, Roseway Heights, Vernon became K-8 schools.
- (14) Day and Residential Treatment Programs (long-term care and treatment).
- (15) No students enrolled for current school year.
- (16) Effective 2006-07, Meek Professional Technical HS, Portland Night HS at Grant, Marshall Night HS, and Madison Focus (shown in Madison enrollment in prior years) merged to form Alliance High School.
- (17) Effective 2006-07, Ockley Green converted from a middle school to a K-8, and Kellogg and Portsmouth no longer received sixth grade students.
- (18) Effective 2005-06, two high schools located at the Marshall campus, Linus Pauling Academy and Portland Academy of International Studies, merged into one school renamed Pauling Academy of Integrated Sciences.
- (19) Applegate, Edwards, Kenton, Richmond and Smith Elementary Schools were closed at the end of the 2004-05 school year. Whitaker Middle school was closed as well. Most elementary school-aged students residing in the Applegate neighborhood area went on to attend Woodlawn. Similarly, students residing in the Edwards neighborhood area went on to attend Abernethy, those at Kenton to Chief Joseph; those at Richmond to Abernethy, Creston or Glencoe; and those at Smith went on to Capitol Hill, Maplewood or Markham. Most middle school students residing in the Whitaker neighborhood area went on to attend Tubman. A new focus/option school was established at the Richmond ES site.
- (20) Effective 2004-05, the Environmental Middle School combined with Sunnyside Elementary and was renamed Sunnyside Environmental School. In addition, the Odyssey program and its students (formerly at Chapman Elementary) moved to Hayhurst Elementary. The Family Cooperative program (formerly at Sunnyside) moved to Bridger Elementary.
- (21) The Pioneer program consists of elementary, middle and high school programs. It was formerly known as ES B Program at Youngson, MS B Program at Foster and HS B Program at Columbia.
- (22) As of the 2003-04 school year, enrollment summaries no longer include the following programs: Hospital Programs (Emanuel, Oregon Health Science University, Oregon State and Shriners Hospitals); M.E.S.D. Functional Living Skills; Portland Early Intervention Program (PeiP) and Columbia Regional Programs (Autism, Deaf and Hard of Hearing, Orthopedic and Vision Services). Administration of the Hospital Programs, Functional Living Skills and PeiP was transferred to Multnomah Education Service District (M.E.S.D.). Historically, enrollments reported for Columbia Regional Programs represent non-District students served by PPS staff on a part-time basis. For purposes of State reporting, membership (i.e., enrollment) the Columbia Regional Program students are reported by the resident District.
- (23) Brooklyn and Meek Elementary Schools were closed at the end of the 2002-03 school year. Most students residing in the Brooklyn neighborhood area went on to attend Grout Elementary, while those residing in the Meek neighborhood area attended Vernon Elementary. Similarly, Wilcox and Youngson Elementary Schools were closed at the end of the 2001-02 school year. Most students residing in the Wilcox neighborhood area went on to attend Vestal Elementary, while those residing in the Youngson neighborhood area attended Bridger Elementary.
- (24) LEP Charter Closed end of 2014-15 school year.

October 2015 Enrollment Summaries are based on enrollment on 10/1/2015 as reported in the Period 1 Cumulative Average Daily Membership State Report.

Portland Public Schools District Enrollment - October 2002 to October 2015



Year	2002	2003	2004	2005	2006	2007	2008	2009	2010	2011	2012	2013	2014	2015
Ungraded	1,473	1,769	5	0	28	53	0	0	0	0	0	0	0	0
9-12	15,413	14,193	14,528	14,591	14,230	13,591	13,091	13,137	13,026	12,924	12,746	12,584	12,722	12,798
6-8	11,470	10,375	10,656	10,111	9,957	9,866	9,880	9,825	9,845	9,936	10,020	10,303	10,371	10,747
PK-5	24,613	22,546	22,467	22,306	22,133	22,578	23,075	23,634	23,930	24,428	24,757	25,211	25,366	25,530
Total	52,969	48,883	47,656	47,008	46,348	46,088	46,046	46,596	46,801	47,288	47,523	48,098	48,459	49,075

Portland Public Schools
October 1, 2015 Enrollment

Name	School Program	Enrollment By Grade														PK-12 Total	
		PK	KG	01	02	03	04	05	06	07	08	09	10	11	12		
Abernethy			91	82	101	80	77	82									513
Ainsworth	Spanish Immersion		45	53	56	56	49	54									313
	Neighborhood Program		50	55	48	45	27	62									287
Ainsworth Total			95	108	104	101	76	116									600
Alameda			109	122	137	122	111	129									730
Arleta			54	53	57	60	58	45	37	51	41						456
Astor			61	59	86	40	45	59	46	41	56						493
Atkinson	Spanish Immersion		29	27	30	26	20	20									152
	Neighborhood Program		43	38	47	49	52	54									283
Atkinson Total			72	65	77	75	72	74									435
Beach	Spanish Immersion		46	48	55	50	47	47	42	29	18						382
	Neighborhood Program		47	34	31	20	23	34	26	22	12						249
Beach Total			93	82	86	70	70	81	68	51	30						631
Beverly Cleary			91	99	117	107	92	100	96	84	73						859
Boise-Eliot/Humboldt		19	70	85	70	66	49	56	47	44	34						540
Bridger	Spanish Immersion		55	50	28	28	26	19	20	17	8						251
	Neighborhood Program		24	29	24	34	17	27	28	19	23						225
Bridger Total			79	79	52	62	43	46	48	36	31						476
Bridlemile			88	94	75	85	76	62									480
Buckman			77	74	86	88	73	83									481
Capitol Hill			77	84	76	71	73	56									437
César Chávez	Spanish Immersion		42	40	43	26	24	23	21	18	14						251
	Neighborhood Program		21	26	24	43	24	27	39	40	27						271
César Chávez Total			63	66	67	69	48	50	60	58	41						522
Chapman			96	120	113	103	119	92									643
Chief Joseph/Ockley Green			71	76	84	67	80	71	60	53	42						604
Creative Science			46	52	52	60	58	59	57	56	36						476
Creston			58	46	48	32	47	53	38	38	32						392
Duniway			69	100	82	79	86	78									494
Faubion		20	53	69	57	68	45	54	43	38	32						479
Forest Park			53	75	64	71	106	80									449
Glencoe			79	80	79	100	81	81									500
Grout			75	66	76	62	49	48									376
Harrison Park			72	79	78	100	90	69	71	84	86						729
Hayhurst	Neighborhood Program		62	48	49	45	48	25									277
	Odyssey Program		24	25	27	24	26	25	23	24	24						222
Hayhurst Total			86	73	76	69	74	50	23	24	24						499
Irvington			63	44	47	66	60	59	53	46	55						493
James John	Spanish Immersion		21	27													48
	Neighborhood Program		45	48	77	80	74	57									381
James John Total			66	75	77	80	74	57									429
Kelly	Russian Immersion		42	52	43	46	43	27									253
	Neighborhood Program		52	54	74	62	55	60									357
Kelly Total			94	106	117	108	98	87									610

Portland Public Schools
October 1, 2015 Enrollment

		Enrollment By Grade														PK-12
Name	School Program	PK	KG	01	02	03	04	05	06	07	08	09	10	11	12	Total
King	Mandarin Immersion		33	26	29											88
	Neighborhood Program	20	17	39	37	47	41	44	21	28	18					312
King Total		20	50	65	66	47	41	44	21	28	18					400
Laurelhurst			75	80	84	82	75	83	76	73	63					691
Lee			56	56	56	65	51	51	46	35	40					456
Lent	Spanish Immersion		21	27	22	24	25	19	18	14	16					186
	Neighborhood Program		29	35	56	45	39	42	47	40	45					378
Lent Total			50	62	78	69	64	61	65	54	61					564
Lewis			66	63	61	72	63	57								382
Llewellyn			84	73	82	98	99	95								531
Maplewood			70	58	51	65	64	51								359
Markham			66	72	68	65	56	50								377
Marysville			55	47	53	45	33	39	37	38	43					390
Peninsula			48	48	49	40	38	45	37	38	31					374
Richmond - Japanese Immersion			111	113	108	107	106	84								629
Rieke			61	66	70	64	78	63								402
Rigler	Spanish Immersion		59	69	54	49	49	34								314
	Neighborhood Program		15	21	17	26	31	27								137
Rigler Total			74	90	71	75	80	61								451
Rosa Parks			41	52	56	66	48	66								329
Roseway Heights	Neighborhood Program		60	59	85	78	74	57	81	66	80					640
	Vietnamese Immersion		28	29												57
Roseway Heights Total			88	88	85	78	74	57	81	66	80					697
Sabin			77	90	68	84	74	73	31	29	42					568
Scott	Spanish Immersion		49	42	45	45			1							182
	Neighborhood Program		20	18	24	21	52	45	39	37	35					291
Scott Total			69	60	69	66	52	45	40	37	35					473
Sitton	Spanish Immersion		49	45												94
	Neighborhood Program		29	26	57	57	77	50								296
Sitton Total			78	71	57	57	77	50								390
Skyline			27	38	38	32	39	24	38	37	27					300
Stephenson			54	63	43	56	49	57								322
Sunnyside Environmental			48	71	64	68	65	66	64	62	66					574
Vernon			70	51	60	65	51	46	34	22	8					407
Vestal			44	52	57	42	48	34	46	40	49					412
Whitman			44	36	45	56	46	44								271
Winterhaven			24	26	28	26	30	30	62	64	60					350
Woodlawn		19	55	62	56	63	52	46	27	20	26					426
Woodmere			57	39	56	51	54	55								312
Woodstock	Mandarin Immersion		55	59	56	56	54	41								321
	Neighborhood Program		32	32	28	30	26	27								175
Woodstock Total			87	91	84	86	80	68								496
Elementary Schools Total		78	3,830	3,996	4,004	3,951	3,717	3,522	1,452	1,347	1,262					27,159

Portland Public Schools
October 1, 2015 Enrollment

Name	School Program	Enrollment By Grade												PK-12		
		PK	KG	01	02	03	04	05	06	07	08	09	10	11	12	Total
Beaumont	Spanish Immersion								25	26	24					75
	Neighborhood Program								173	159	164					496
Beaumont Total									198	185	188					571
da Vinci									151	156	151					458
George									131	117	121					369
Gray									178	195	193					566
Hosford	Mandarin Immersion								47	39	40					126
	Neighborhood Program								206	161	147					514
Hosford Total									253	200	187					640
Jackson									201	210	195					606
Lane	Russian Immersion								14	7	16					37
	Neighborhood Program								161	149	134					444
Lane Total									175	156	150					481
Mt Tabor	Spanish Immersion								25	25	26					76
	Japanese Immersion								94	83	77					254
	Neighborhood Program								128	125	111					364
Mt Tabor Total									247	233	214					694
Sellwood									190	208	162					560
West Sylvan	Spanish Immersion								36	42	48					126
	Neighborhood Program								283	281	276					840
West Sylvan Total									319	323	324					966
Middle Schools Total									2,043	1,983	1,885					5,911

Portland Public Schools
October 1, 2015 Enrollment

		Enrollment By Grade												PK-12		
Name	School Program	PK	KG	01	02	03	04	05	06	07	08	09	10	11	12	Total
Benson	Spanish Immersion											12				12
	Benson Polytechnic H.S.											257	250	215	180	902
Benson Total												269	250	215	180	914
Cleveland	Mandarin Immersion											32	19	10	16	77
	Neighborhood Program											429	409	351	334	1,523
Cleveland Total												461	428	361	350	1,600
Franklin	Spanish Immersion											39	14	21	23	97
	Neighborhood Program											424	429	317	303	1,473
Franklin Total												463	443	338	326	1,570
Grant	Japanese Immersion											43	32	31	18	124
	Neighborhood Program											364	359	302	332	1,357
Grant Total												407	391	333	350	1,481
Jefferson												165	116	133	110	524
Lincoln	Spanish Immersion											50	41	53	47	191
	Neighborhood Program											403	365	370	367	1,505
Lincoln Total												453	406	423	414	1,696
Madison	Spanish Immersion											14	18	1		33
	Neighborhood Program											307	307	243	244	1,101
Madison Total												321	325	244	244	1,134
Roosevelt	Spanish Immersion											11	12	55	34	112
	Neighborhood Program											228	219	179	202	828
Roosevelt Total												239	231	234	236	940
Wilson												354	331	356	283	1,324
High Schools Total												3,132	2,921	2,637	2,493	11,183
ACCESS				12	13	55	54	55	52	51	54					346
Alliance	Alliance H.S. @ Meek Campus											7	16	39	44	106
	Alliance H.S. @ Benson Campus													5	67	72
Alliance Total												7	16	44	111	178
Clarendon		16														16
Ed Options Transition Center												2	10	11	5	28
Head Start Early Childhood Ed		799														799
Metro. Learning Center	Metropolitan Learning Ctr K-8		24	26	26	25	26	25	52	51	51					306
	Metro. Learning Center											24	29	37	30	120
Metro. Learning Center Total			24	26	26	25	26	25	52	51	51	24	29	37	30	426
Portland International Scholars Academy												9	6	6	1	22
Ramona		1														1
Teen Parent Services															1	1
Selected Focus/Alternative Programs Total		816	24	38	39	80	80	80	104	102	105	42	61	98	148	1,817

Portland Public Schools
October 1, 2015 Enrollment

Name	School Program	Enrollment By Grade														PK-12 Total		
		PK	KG	01	02	03	04	05	06	07	08	09	10	11	12			
Depaul Center													4	5	11	2	22	
Mt Scott Park Learning Ctr											4	10	18	27	41	45	145	
NAYA Early College Academy													3	15	19	33	70	
New Avenues															1	12	13	
Open Meadow										8	17	15	1				41	
Outside In															1	19	20	
PCC	P.C.C. YES!												1	4	18	160	183	
	P.C.C. H.S. Completion													3	52	122	177	
PCC Total													1	7	70	282	360	
Rosemary Anderson	Rosemary Anderson H.S.													16	37	113	166	
	Rosemary Anderson H.S.-New Columbia												1	5	9	34	49	
Rosemary Anderson Total													1	21	46	147	215	
SE Works															1	13	14	
Youth Builders															5	27	32	
Youth Progress Association													3	5	7	17	32	
Community Based Programs Total											8	21	25	31	80	202	597	964
C.T.C. Humboldt																	53	53
CTC Northeast																	30	30
CTC Southeast																	63	63
DART Programs	Nickerson Adt											1	2	1	2	2		8
	White Shield												1	1	3	5	10	
	Wildflowers												2	1	3	3	2	11
	Parry Center			1	1	3	3	5	4	8	5	9	10	4	2		55	
	Breakthrough													1	2	2	5	
	Morrison Hand in Hand	3	3	3	2	1												12
	Clinton School											1	1	3	2	2	1	10
	Johns Landing School											1	3	3	3	2		12
	Parry Center SCIP							3	3	2	1	2						11
	SAGE														1			1
DART Programs Total		3	3	4	3	4	6	8	6	12	15	19	22	18	12		135	
Park Academy															1			1
PPS Pioneer Programs	Pioneer K-6 @ Holladay Center			8	11	6	13	13										51
	Pioneer 5-8 @ Youngson							1	12	13	15							41
	Pioneer Annex 9-12											14	12	7	8			41
PPS Pioneer Programs Total				8	11	6	13	14	12	13	15	14	12	7	8		133	
PRAISE			1		1	1			2		1					1		7
Serendipity							1							1				2
SpEd KG Transitions		26																26
Victory Academy - SPED													1					1
Special Services Total		29	4	12	15	11	20	22	20	25	31	34	35	26	167	451		

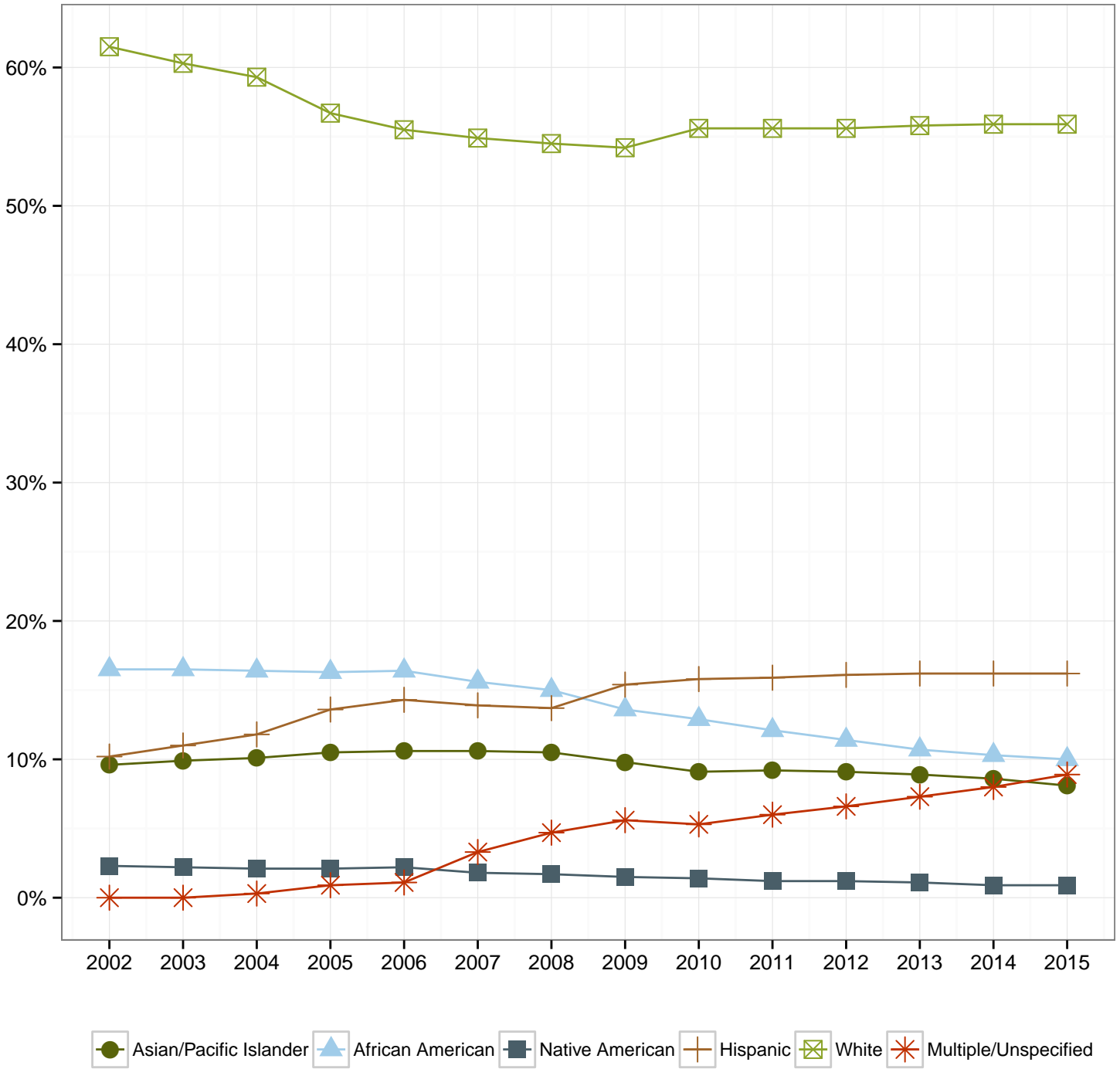
Portland Public Schools
October 1, 2015 Enrollment

Name	School Program	Enrollment By Grade												PK-12			
		PK	KG	01	02	03	04	05	06	07	08	09	10	11	12	Total	
Arthur Academy			28	30	28	30	28	27								171	
Cm2 Opal School			15	16	16	15	13	13								88	
Emerson School			24	24	24	24	22	26								144	
Kairos PDX			35	22	10											67	
Le Monde			68	47	42	42	27									226	
Portland Village School	Portland Village School K-5		38	54	50	50	48	48								288	
	Portland Village School 6-8								36	48	44					128	
Portland Village School Total			38	54	50	50	48	48	36	48	44					416	
Self Enhancement Inc.									33	47	42					122	
Trillium	Trillium 9-12											20	34	18	22	94	
	Trillium K-8		31	27	28	30	28	34	26	28	30					262	
Trillium Total			31	27	28	30	28	34	26	28	30	20	34	18	22	356	
Public Charter Schools Total			239	220	198	191	166	148	95	123	116	20	34	18	22	1,590	
Total			923	4,097	4,266	4,256	4,233	3,983	3,772	3,722	3,601	3,424	3,259	3,131	2,981	3,427	49,075

October 2015 Enrollment Summaries are based on enrollment on 10/1/2015 as reported in the Period 1 Cumulative Average Daily Membership State Report.

Students receiving Special Education services only who are not regularly attending, but are in the student information system (SIS), are excluded from the enrollment summaries.

Portland Public Schools
 District Race/Ethnicity Percentages - October 2002 to October 2015



Race/Ethnicity	2002	2003	2004	2005	2006	2007	2008	2009	2010	2011	2012	2013	2014	2015
Asian/Pacific Islander	9.6%	9.9%	10.1%	10.5%	10.6%	10.6%	10.5%	9.8%	9.1%	9.2%	9.1%	8.9%	8.6%	8.1%
African American	16.5%	16.5%	16.4%	16.3%	16.4%	15.6%	15.0%	13.6%	12.9%	12.1%	11.4%	10.7%	10.3%	10.0%
Native American	2.3%	2.2%	2.1%	2.1%	2.2%	1.8%	1.7%	1.5%	1.4%	1.2%	1.2%	1.1%	0.9%	0.9%
Hispanic	10.2%	11.0%	11.8%	13.6%	14.3%	13.9%	13.7%	15.4%	15.8%	15.9%	16.1%	16.2%	16.2%	16.2%
White	61.5%	60.3%	59.3%	56.7%	55.5%	54.9%	54.5%	54.2%	55.6%	55.6%	55.6%	55.8%	55.9%	55.9%
Multiple/Unspecified	0.0%	0.0%	0.3%	0.9%	1.1%	3.3%	4.7%	5.6%	5.3%	6.0%	6.6%	7.3%	8.0%	8.9%

Portland Public Schools
Enrollment Summary by Race and Ethnicity, October 2015

Name	School Program	Hispanic		Not Hispanic Ethnicity and								PK-12 Total				
		Any Race	African American Race	Asian Race	Native American Race	Pacific Islander Race	White Race	Multiple Race								
Abernethy		29	5.7%		0.0%	11	2.1%	2	0.4%		0.0%	435	84.8%	36	7.0%	513
Ainsworth	Spanish Immersion	75	24.0%	2	0.6%	13	4.2%		0.0%		0.0%	192	61.3%	31	9.9%	313
	Neighborhood Program	17	5.9%	2	0.7%	34	11.8%		0.0%		0.0%	208	72.5%	26	9.1%	287
Ainsworth Total		92	15.3%	4	0.7%	47	7.8%		0.0%		0.0%	400	66.7%	57	9.5%	600
Alameda		28	3.8%	7	1.0%	12	1.6%		0.0%	1	0.1%	628	86.0%	54	7.4%	730
Arleta		82	18.0%	19	4.2%	51	11.2%	4	0.9%		0.0%	260	57.0%	40	8.8%	456
Astor		75	15.2%	45	9.1%	8	1.6%	9	1.8%	7	1.4%	298	60.4%	51	10.3%	493
Atkinson	Spanish Immersion	89	58.6%	2	1.3%	1	0.7%		0.0%		0.0%	55	36.2%	5	3.3%	152
	Neighborhood Program	21	7.4%	12	4.2%	37	13.1%	3	1.1%		0.0%	187	66.1%	23	8.1%	283
Atkinson Total		110	25.3%	14	3.2%	38	8.7%	3	0.7%		0.0%	242	55.6%	28	6.4%	435
Beach	Spanish Immersion	159	41.6%	19	5.0%	1	0.3%	1	0.3%		0.0%	178	46.6%	24	6.3%	382
	Neighborhood Program	46	18.5%	77	30.9%	13	5.2%	5	2.0%	7	2.8%	87	34.9%	14	5.6%	249
Beach Total		205	32.5%	96	15.2%	14	2.2%	6	1.0%	7	1.1%	265	42.0%	38	6.0%	631
Beverly Cleary		52	6.1%	22	2.6%	38	4.4%	8	0.9%	2	0.2%	691	80.4%	46	5.4%	859
Boise-Eliot/Humboldt		60	11.1%	320	59.3%	14	2.6%	6	1.1%	1	0.2%	85	15.7%	54	10.0%	540
Bridger	Spanish Immersion	141	56.2%	8	3.2%	3	1.2%		0.0%	1	0.4%	88	35.1%	10	4.0%	251
	Neighborhood Program	29	12.9%	18	8.0%	34	15.1%	6	2.7%	8	3.6%	106	47.1%	24	10.7%	225
Bridger Total		170	35.7%	26	5.5%	37	7.8%	6	1.3%	9	1.9%	194	40.8%	34	7.1%	476
Bridlemile		44	9.2%	4	0.8%	18	3.8%	2	0.4%	7	1.5%	356	74.2%	49	10.2%	480
Buckman		52	10.8%	17	3.5%	12	2.5%	6	1.2%		0.0%	318	66.1%	76	15.8%	481
Capitol Hill		40	9.2%	14	3.2%	14	3.2%		0.0%	1	0.2%	336	76.9%	32	7.3%	437
César Chávez	Spanish Immersion	189	75.3%	11	4.4%		0.0%	2	0.8%	1	0.4%	42	16.7%	6	2.4%	251
	Neighborhood Program	101	37.3%	66	24.4%	8	3.0%	6	2.2%	24	8.9%	45	16.6%	21	7.7%	271
César Chávez Total		290	55.6%	77	14.8%	8	1.5%	8	1.5%	25	4.8%	87	16.7%	27	5.2%	522
Chapman		51	7.9%	15	2.3%	51	7.9%	3	0.5%		0.0%	459	71.4%	64	10.0%	643
Chief Joseph/Ockley Green		75	12.4%	76	12.6%	28	4.6%	8	1.3%	15	2.5%	330	54.6%	72	11.9%	604
Creative Science		27	5.7%	10	2.1%	44	9.2%	4	0.8%	3	0.6%	353	74.2%	35	7.4%	476
Creston		79	20.2%	13	3.3%	43	11.0%		0.0%	5	1.3%	220	56.1%	32	8.2%	392
Duniway		28	5.7%	2	0.4%	9	1.8%	2	0.4%		0.0%	413	83.6%	40	8.1%	494
Faubion		146	30.5%	136	28.4%	16	3.3%	5	1.0%	3	0.6%	133	27.8%	40	8.4%	479
Forest Park		18	4.0%	7	1.6%	109	24.3%	1	0.2%		0.0%	277	61.7%	37	8.2%	449
Glencoe		50	10.0%	19	3.8%	13	2.6%	1	0.2%	1	0.2%	354	70.8%	62	12.4%	500
Grout		50	13.3%	53	14.1%	42	11.2%	5	1.3%	5	1.3%	187	49.7%	34	9.0%	376
Harrison Park		139	19.1%	163	22.4%	193	26.5%	6	0.8%	9	1.2%	175	24.0%	44	6.0%	729
Hayhurst	Neighborhood Program	30	10.8%	10	3.6%	10	3.6%	2	0.7%	2	0.7%	188	67.9%	35	12.6%	277
	Odyssey Program	6	2.7%		0.0%	5	2.3%		0.0%		0.0%	195	87.8%	16	7.2%	222
Hayhurst Total		36	7.2%	10	2.0%	15	3.0%	2	0.4%	2	0.4%	383	76.8%	51	10.2%	499
Irvington		54	11.0%	81	16.4%	5	1.0%	3	0.6%		0.0%	295	59.8%	55	11.2%	493
James John	Spanish Immersion	28	58.3%	2	4.2%	2	4.2%	1	2.1%		0.0%	14	29.2%	1	2.1%	48
	Neighborhood Program	145	38.1%	36	9.4%	16	4.2%	4	1.0%	5	1.3%	137	36.0%	38	10.0%	381
James John Total		173	40.3%	38	8.9%	18	4.2%	5	1.2%	5	1.2%	151	35.2%	39	9.1%	429
Kelly	Russian Immersion	11	4.3%	2	0.8%		0.0%		0.0%		0.0%	238	94.1%	2	0.8%	253
	Neighborhood Program	112	31.4%	23	6.4%	57	16.0%	6	1.7%	3	0.8%	120	33.6%	36	10.1%	357
Kelly Total		123	20.2%	25	4.1%	57	9.3%	6	1.0%	3	0.5%	358	58.7%	38	6.2%	610
King	Mandarin Immersion	15	17.0%	27	30.7%	4	4.5%		0.0%		0.0%	27	30.7%	15	17.0%	88
	Neighborhood Program	101	32.4%	145	46.5%		0.0%	3	1.0%	4	1.3%	28	9.0%	31	9.9%	312
King Total		116	29.0%	172	43.0%	4	1.0%	3	0.8%	4	1.0%	55	13.8%	46	11.5%	400
Laurelhurst		40	5.8%	16	2.3%	24	3.5%	3	0.4%		0.0%	548	79.3%	60	8.7%	691
Lee		72	15.8%	83	18.2%	93	20.4%	9	2.0%	5	1.1%	138	30.3%	56	12.3%	456

Portland Public Schools
Enrollment Summary by Race and Ethnicity, October 2015

Name	School Program	Hispanic		Not Hispanic Ethnicity and										PK-12 Total		
		Any Race	African American Race	Asian Race	Native American Race	Pacific Islander Race	White Race	Multiple Race								
Lent	Spanish Immersion	153	82.3%	4	2.2%	2	1.1%		0.0%		0.0%	22	11.8%	5	2.7%	186
	Neighborhood Program	97	25.7%	48	12.7%	82	21.7%	2	0.5%	5	1.3%	114	30.2%	30	7.9%	378
Lent Total		250	44.3%	52	9.2%	84	14.9%	2	0.4%	5	0.9%	136	24.1%	35	6.2%	564
Lewis		37	9.7%	9	2.4%	11	2.9%	1	0.3%		0.0%	284	74.3%	40	10.5%	382
Llewellyn		32	6.0%	4	0.8%	9	1.7%	2	0.4%		0.0%	432	81.4%	52	9.8%	531
Maplewood		28	7.8%	5	1.4%	3	0.8%	1	0.3%	1	0.3%	281	78.3%	40	11.1%	359
Markham		39	10.3%	85	22.5%	7	1.9%		0.0%	8	2.1%	205	54.4%	33	8.8%	377
Marysville		75	19.2%	49	12.6%	82	21.0%	3	0.8%	16	4.1%	138	35.4%	27	6.9%	390
Peninsula		110	29.4%	51	13.6%	10	2.7%	4	1.1%	16	4.3%	144	38.5%	39	10.4%	374
Richmond - Japanese Immersion		14	2.2%	5	0.8%	54	8.6%	1	0.2%	2	0.3%	365	58.0%	188	29.9%	629
Rieke		29	7.2%	7	1.7%	7	1.7%	2	0.5%		0.0%	316	78.6%	41	10.2%	402
Rigler	Spanish Immersion	210	66.9%	22	7.0%	3	1.0%	2	0.6%	1	0.3%	60	19.1%	16	5.1%	314
	Neighborhood Program	41	29.9%	36	26.3%	8	5.8%	3	2.2%	3	2.2%	37	27.0%	9	6.6%	137
Rigler Total		251	55.7%	58	12.9%	11	2.4%	5	1.1%	4	0.9%	97	21.5%	25	5.5%	451
Rosa Parks		80	24.3%	158	48.0%	5	1.5%	2	0.6%	4	1.2%	51	15.5%	29	8.8%	329
Roseway Heights	Neighborhood Program	50	7.8%	35	5.5%	73	11.4%	2	0.3%	3	0.5%	402	62.8%	75	11.7%	640
	Vietnamese Immersion	4	7.0%		0.0%	41	71.9%		0.0%		0.0%	10	17.5%	2	3.5%	57
Roseway Heights Total		54	7.7%	35	5.0%	114	16.4%	2	0.3%	3	0.4%	412	59.1%	77	11.0%	697
Sabin		45	7.9%	88	15.5%	8	1.4%	2	0.4%	2	0.4%	354	62.3%	69	12.1%	568
Scott	Spanish Immersion	103	56.6%	13	7.1%	2	1.1%		0.0%	3	1.6%	56	30.8%	5	2.7%	182
	Neighborhood Program	155	53.3%	42	14.4%	16	5.5%	5	1.7%	7	2.4%	55	18.9%	11	3.8%	291
Scott Total		258	54.5%	55	11.6%	18	3.8%	5	1.1%	10	2.1%	111	23.5%	16	3.4%	473
Sitton	Spanish Immersion	52	55.3%	8	8.5%	1	1.1%	3	3.2%	1	1.1%	23	24.5%	6	6.4%	94
	Neighborhood Program	115	38.9%	46	15.5%	8	2.7%	3	1.0%	8	2.7%	68	23.0%	48	16.2%	296
Sitton Total		167	42.8%	54	13.8%	9	2.3%	6	1.5%	9	2.3%	91	23.3%	54	13.8%	390
Skyline		22	7.3%	6	2.0%	9	3.0%	4	1.3%	2	0.7%	237	79.0%	20	6.7%	300
Stephenson		15	4.7%	6	1.9%	20	6.2%	3	0.9%	2	0.6%	259	80.4%	17	5.3%	322
Sunnyside Environmental		33	5.7%	4	0.7%	12	2.1%	3	0.5%	1	0.2%	458	79.8%	63	11.0%	574
Vernon		55	13.5%	95	23.3%	6	1.5%	2	0.5%	3	0.7%	198	48.6%	48	11.8%	407
Vestal		65	15.8%	67	16.3%	58	14.1%	4	1.0%	12	2.9%	160	38.8%	46	11.2%	412
Whitman		74	27.3%	22	8.1%	36	13.3%	5	1.8%	2	0.7%	105	38.7%	27	10.0%	271
Winterhaven		16	4.6%	7	2.0%	12	3.4%		0.0%		0.0%	289	82.6%	26	7.4%	350
Woodlawn		96	22.5%	195	45.8%	9	2.1%	2	0.5%	20	4.7%	79	18.5%	25	5.9%	426
Woodmere		82	26.3%	26	8.3%	63	20.2%	2	0.6%	9	2.9%	102	32.7%	28	9.0%	312
Woodstock	Mandarin Immersion	8	2.5%		0.0%	141	43.9%		0.0%		0.0%	123	38.3%	49	15.3%	321
	Neighborhood Program	18	10.3%	3	1.7%	6	3.4%		0.0%		0.0%	132	75.4%	16	9.1%	175
Woodstock Total		26	5.2%	3	0.6%	147	29.6%		0.0%		0.0%	255	51.4%	65	13.1%	496
Elementary Schools Total		4,559	16.8%	2,730	10.1%	1,890	7.0%	189	0.7%	251	0.9%	14,983	55.2%	2,557	9.4%	27,159

Portland Public Schools
Enrollment Summary by Race and Ethnicity, October 2015

Name	School Program	Hispanic		Not Hispanic Ethnicity and								PK-12 Total				
		Any Race	African American Race	Asian Race	Native American Race	Pacific Islander Race	White Race	Multiple Race								
Beaumont	Spanish Immersion	52	69.3%	3	4.0%	1	1.3%		0.0%		0.0%	15	20.0%	4	5.3%	75
	Neighborhood Program	72	14.5%	58	11.7%	14	2.8%	7	1.4%	2	0.4%	305	61.5%	38	7.7%	496
Beaumont Total		124	21.7%	61	10.7%	15	2.6%	7	1.2%	2	0.4%	320	56.0%	42	7.4%	571
da Vinci		46	10.0%	20	4.4%	6	1.3%	4	0.9%		0.0%	346	75.5%	36	7.9%	458
George		127	34.4%	93	25.2%	23	6.2%	5	1.4%	11	3.0%	82	22.2%	28	7.6%	369
Gray		41	7.2%	13	2.3%	20	3.5%	1	0.2%	2	0.4%	429	75.8%	60	10.6%	566
Hosford	Mandarin Immersion	3	2.4%	1	0.8%	58	46.0%		0.0%		0.0%	41	32.5%	23	18.3%	126
	Neighborhood Program	46	8.9%	21	4.1%	41	8.0%	6	1.2%	3	0.6%	351	68.3%	46	8.9%	514
Hosford Total		49	7.7%	22	3.4%	99	15.5%	6	0.9%	3	0.5%	392	61.3%	69	10.8%	640
Jackson		42	6.9%	47	7.8%	17	2.8%	3	0.5%	3	0.5%	443	73.1%	51	8.4%	606
Lane	Russian Immersion	1	2.7%		0.0%		0.0%		0.0%		0.0%	36	97.3%		0.0%	37
	Neighborhood Program	126	28.4%	27	6.1%	80	18.0%	7	1.6%	6	1.4%	165	37.2%	33	7.4%	444
Lane Total		127	26.4%	27	5.6%	80	16.6%	7	1.5%	6	1.2%	201	41.8%	33	6.9%	481
Mt Tabor	Spanish Immersion	48	63.2%	1	1.3%	2	2.6%	1	1.3%		0.0%	23	30.3%	1	1.3%	76
	Japanese Immersion	13	5.1%	2	0.8%	16	6.3%	3	1.2%	1	0.4%	154	60.6%	65	25.6%	254
	Neighborhood Program	29	8.0%	11	3.0%	36	9.9%	2	0.5%	1	0.3%	255	70.1%	30	8.2%	364
Mt Tabor Total		90	13.0%	14	2.0%	54	7.8%	6	0.9%	2	0.3%	432	62.2%	96	13.8%	694
Sellwood		43	7.7%	8	1.4%	9	1.6%	1	0.2%	4	0.7%	455	81.3%	40	7.1%	560
West Sylvan	Spanish Immersion	25	19.8%		0.0%	5	4.0%		0.0%		0.0%	90	71.4%	6	4.8%	126
	Neighborhood Program	62	7.4%	12	1.4%	82	9.8%	3	0.4%	3	0.4%	602	71.7%	76	9.0%	840
West Sylvan Total		87	9.0%	12	1.2%	87	9.0%	3	0.3%	3	0.3%	692	71.6%	82	8.5%	966
Middle Schools Total		776	13.1%	317	5.4%	410	6.9%	43	0.7%	36	0.6%	3,792	64.2%	537	9.1%	5,911
Benson	Spanish Immersion	12	100.0%		0.0%		0.0%		0.0%		0.0%		0.0%		0.0%	12
	Benson Polytechnic H.S.	217	24.1%	184	20.4%	118	13.1%	6	0.7%	4	0.4%	295	32.7%	78	8.6%	902
Benson Total		229	25.1%	184	20.1%	118	12.9%	6	0.7%	4	0.4%	295	32.3%	78	8.5%	914
Cleveland	Mandarin Immersion	2	2.6%	1	1.3%	39	50.6%		0.0%		0.0%	23	29.9%	12	15.6%	77
	Neighborhood Program	144	9.5%	50	3.3%	104	6.8%	10	0.7%	7	0.5%	1,095	71.9%	113	7.4%	1,523
Cleveland Total		146	9.1%	51	3.2%	143	8.9%	10	0.6%	7	0.4%	1,118	69.9%	125	7.8%	1,600
Franklin	Spanish Immersion	73	75.3%	2	2.1%		0.0%		0.0%		0.0%	18	18.6%	4	4.1%	97
	Neighborhood Program	268	18.2%	90	6.1%	269	18.3%	11	0.7%	16	1.1%	726	49.3%	93	6.3%	1,473
Franklin Total		341	21.7%	92	5.9%	269	17.1%	11	0.7%	16	1.0%	744	47.4%	97	6.2%	1,570
Grant	Japanese Immersion	4	3.2%		0.0%	16	12.9%	3	2.4%		0.0%	70	56.5%	31	25.0%	124
	Neighborhood Program	100	7.4%	153	11.3%	51	3.8%	8	0.6%	6	0.4%	920	67.8%	119	8.8%	1,357
Grant Total		104	7.0%	153	10.3%	67	4.5%	11	0.7%	6	0.4%	990	66.8%	150	10.1%	1,481
Jefferson		70	13.4%	282	53.8%	5	1.0%	4	0.8%	14	2.7%	105	20.0%	44	8.4%	524
Lincoln	Spanish Immersion	45	23.6%	4	2.1%	5	2.6%		0.0%		0.0%	129	67.5%	8	4.2%	191
	Neighborhood Program	80	5.3%	42	2.8%	160	10.6%	4	0.3%	4	0.3%	1,100	73.1%	115	7.6%	1,505
Lincoln Total		125	7.4%	46	2.7%	165	9.7%	4	0.2%	4	0.2%	1,229	72.5%	123	7.3%	1,696
Madison	Spanish Immersion	23	69.7%	1	3.0%	1	3.0%		0.0%		0.0%	5	15.2%	3	9.1%	33
	Neighborhood Program	245	22.3%	195	17.7%	162	14.7%	14	1.3%	16	1.5%	370	33.6%	99	9.0%	1,101
Madison Total		268	23.6%	196	17.3%	163	14.4%	14	1.2%	16	1.4%	375	33.1%	102	9.0%	1,134
Roosevelt	Spanish Immersion	108	96.4%		0.0%		0.0%		0.0%	1	0.9%	3	2.7%		0.0%	112
	Neighborhood Program	245	29.6%	187	22.6%	43	5.2%	13	1.6%	28	3.4%	251	30.3%	61	7.4%	828
Roosevelt Total		353	37.6%	187	19.9%	43	4.6%	13	1.4%	29	3.1%	254	27.0%	61	6.5%	940
Wilson		118	8.9%	76	5.7%	49	3.7%	8	0.6%	7	0.5%	978	73.9%	88	6.6%	1,324
High Schools Total		1,754	15.7%	1,267	11.3%	1,022	9.1%	81	0.7%	103	0.9%	6,088	54.4%	868	7.8%	11,183

Portland Public Schools
Enrollment Summary by Race and Ethnicity, October 2015

Name	School Program	Hispanic		Not Hispanic Ethnicity and										PK-12 Total		
		Any Race		African American Race		Asian Race		Native American Race		Pacific Islander Race		White Race			Multiple Race	
ACCESS		18	5.2%	7	2.0%	43	12.4%	1	0.3%		0.0%	248	71.7%	29	8.4%	346
Alliance	Alliance H.S. @ Meek Campus	20	18.9%	18	17.0%	3	2.8%	6	5.7%	2	1.9%	50	47.2%	7	6.6%	106
	Alliance H.S. @ Benson Campus	27	37.5%	10	13.9%	3	4.2%		0.0%		0.0%	25	34.7%	7	9.7%	72
Alliance Total		47	26.4%	28	15.7%	6	3.4%	6	3.4%	2	1.1%	75	42.1%	14	7.9%	178
Clarendon		2	12.5%		0.0%		0.0%	12	75.0%		0.0%		0.0%	2	12.5%	16
Ed Options Transition Center		4	14.3%	3	10.7%		0.0%	1	3.6%	2	7.1%	13	46.4%	5	17.9%	28
Head Start Early Childhood Ed		315	39.4%	138	17.3%	95	11.9%	19	2.4%	6	0.8%	171	21.4%	55	6.9%	799
Metro. Learning Center		44	10.3%	4	0.9%	12	2.8%	2	0.5%		0.0%	343	80.5%	21	4.9%	426
Portland International Scholars Academy		12	54.5%	5	22.7%	3	13.6%		0.0%		0.0%	2	9.1%		0.0%	22
Ramona		1	100.0%		0.0%		0.0%		0.0%		0.0%		0.0%		0.0%	1
Teen Parent Services			0.0%	1	100.0%		0.0%		0.0%		0.0%		0.0%		0.0%	1
Selected Focus/Alternative Programs Total		443	24.4%	186	10.2%	159	8.8%	41	2.3%	10	0.6%	852	46.9%	126	6.9%	1,817
Depaul Center		3	13.6%		0.0%		0.0%	3	13.6%		0.0%	16	72.7%		0.0%	22
Mt Scott Park Learning Ctr		31	21.4%	8	5.5%		0.0%	1	0.7%		0.0%	88	60.7%	17	11.7%	145
NAYA Early College Academy		24	34.3%	11	15.7%	3	4.3%	19	27.1%	1	1.4%	5	7.1%	7	10.0%	70
New Avenues		2	15.4%	3	23.1%		0.0%		0.0%		0.0%	7	53.8%	1	7.7%	13
Open Meadow		8	19.5%	9	22.0%		0.0%	1	2.4%		0.0%	18	43.9%	5	12.2%	41
Outside In		5	25.0%	5	25.0%		0.0%		0.0%	1	5.0%	9	45.0%		0.0%	20
PCC	P.C.C. YES!	52	28.4%	22	12.0%	28	15.3%	5	2.7%		0.0%	67	36.6%	9	4.9%	183
	P.C.C. H.S. Completion	16	9.0%	18	10.2%	3	1.7%	5	2.8%		0.0%	121	68.4%	14	7.9%	177
PCC Total		68	18.9%	40	11.1%	31	8.6%	10	2.8%		0.0%	188	52.2%	23	6.4%	360
Rosemary Anderson		61	28.4%	84	39.1%	3	1.4%	5	2.3%	2	0.9%	37	17.2%	23	10.7%	215
SE Works		2	14.3%	2	14.3%		0.0%		0.0%	1	7.1%	9	64.3%		0.0%	14
Youth Builders		8	25.0%	4	12.5%	1	3.1%	4	12.5%	1	3.1%	13	40.6%	1	3.1%	32
Youth Progress Association		12	37.5%	4	12.5%		0.0%	1	3.1%		0.0%	11	34.4%	4	12.5%	32
Community Based Programs Total		224	23.2%	170	17.6%	38	3.9%	44	4.6%	6	0.6%	401	41.6%	81	8.4%	964
C.T.C. Humboldt		4	7.5%	8	15.1%	3	5.7%	1	1.9%		0.0%	34	64.2%	3	5.7%	53
CTC Northeast		3	10.0%	5	16.7%	1	3.3%		0.0%		0.0%	20	66.7%	1	3.3%	30
CTC Southeast		8	12.7%	4	6.3%	3	4.8%	2	3.2%		0.0%	45	71.4%	1	1.6%	63
DART Programs	Nickerson Adt	1	12.5%	2	25.0%		0.0%		0.0%		0.0%	4	50.0%	1	12.5%	8
	White Shield	1	10.0%	1	10.0%	1	10.0%	2	20.0%		0.0%	5	50.0%		0.0%	10
	Wildflowers	1	9.1%	1	9.1%		0.0%	2	18.2%		0.0%	7	63.6%		0.0%	11
	Parry Center	7	12.7%	3	5.5%	1	1.8%	1	1.8%		0.0%	39	70.9%	4	7.3%	55
	Breakthrough	2	40.0%		0.0%		0.0%		0.0%		0.0%	3	60.0%		0.0%	5
	Morrison Hand in Hand	1	8.3%	4	33.3%		0.0%	1	8.3%		0.0%	5	41.7%	1	8.3%	12
	Clinton School	2	20.0%	1	10.0%		0.0%		0.0%		0.0%	7	70.0%		0.0%	10
	Johns Landing School	2	16.7%		0.0%	1	8.3%	2	16.7%		0.0%	6	50.0%	1	8.3%	12
	Parry Center SCIP	1	9.1%	1	9.1%		0.0%	1	9.1%		0.0%	7	63.6%	1	9.1%	11
	SAGE		0.0%		0.0%		0.0%		0.0%		0.0%		0.0%	1	100.0%	1
DART Programs Total		18	13.3%	13	9.6%	3	2.2%	9	6.7%		0.0%	83	61.5%	9	6.7%	135
Park Academy			0.0%		0.0%		0.0%		0.0%		0.0%	1	100.0%		0.0%	1
PPS Pioneer Programs	Pioneer K-6 @ Holladay Center	6	11.8%	6	11.8%		0.0%	2	3.9%		0.0%	33	64.7%	4	7.8%	51
	Pioneer 5-8 @ Youngson	4	9.8%	9	22.0%		0.0%		0.0%		0.0%	25	61.0%	3	7.3%	41
	Pioneer Annex 9-12	8	19.5%	9	22.0%	1	2.4%	1	2.4%		0.0%	18	43.9%	4	9.8%	41
PPS Pioneer Programs Total		18	13.5%	24	18.0%	1	0.8%	3	2.3%		0.0%	76	57.1%	11	8.3%	133
PRAISE		3	42.9%		0.0%		0.0%		0.0%		0.0%	4	57.1%		0.0%	7
Serendipity			0.0%		0.0%		0.0%		0.0%		0.0%	2	100.0%		0.0%	2
SpEd KG Transitions		2	7.7%	5	19.2%	2	7.7%		0.0%		0.0%	13	50.0%	4	15.4%	26
Victory Academy - SPED			0.0%		0.0%		0.0%		0.0%		0.0%	1	100.0%		0.0%	1
Special Services Total		56	12.4%	59	13.1%	13	2.9%	15	3.3%		0.0%	279	61.9%	29	6.4%	451

Portland Public Schools
Enrollment Summary by Race and Ethnicity, October 2015

Name	School Program	Hispanic		Not Hispanic Ethnicity and										PK-12 Total		
		Any Race		African American Race	Asian Race	Native American Race	Pacific Islander Race	White Race	Multiple Race							
Arthur Academy		18	10.5%	1	0.6%	15	8.8%	1	0.6%		0.0%	113	66.1%	23	13.5%	171
Cm2 Opal School		7	8.0%	2	2.3%		0.0%		0.0%	1	1.1%	66	75.0%	12	13.6%	88
Emerson School		19	13.2%	8	5.6%	5	3.5%		0.0%		0.0%	67	46.5%	45	31.3%	144
Kairos PDX		7	10.4%	44	65.7%	1	1.5%		0.0%		0.0%	12	17.9%	3	4.5%	67
Le Monde		10	4.4%	8	3.5%	1	0.4%	3	1.3%	1	0.4%	176	77.9%	27	11.9%	226
Portland Village School	Portland Village School K-5	26	9.0%	5	1.7%		0.0%	1	0.3%	1	0.3%	236	81.9%	19	6.6%	288
	Portland Village School 6-8	18	14.1%	2	1.6%		0.0%	1	0.8%		0.0%	101	78.9%	6	4.7%	128
Portland Village School Total		44	10.6%	7	1.7%		0.0%	2	0.5%	1	0.2%	337	81.0%	25	6.0%	416
Self Enhancement Inc.		5	4.1%	101	82.8%	1	0.8%	1	0.8%		0.0%	2	1.6%	12	9.8%	122
Trillium	Trillium 9-12	9	9.6%	5	5.3%	2	2.1%	1	1.1%		0.0%	70	74.5%	7	7.4%	94
	Trillium K-8	14	5.3%	12	4.6%	4	1.5%		0.0%		0.0%	208	79.4%	24	9.2%	262
Trillium Total		23	6.5%	17	4.8%	6	1.7%	1	0.3%		0.0%	278	78.1%	31	8.7%	356
Public Charter Schools Total		133	8.4%	188	11.8%	29	1.8%	8	0.5%	3	0.2%	1,051	66.1%	178	11.2%	1,590
Grand Total		7,945	16.2%	4,917	10.0%	3,561	7.3%	421	0.9%	409	0.8%	27,446	55.9%	4,376	8.9%	49,075

October 2015 Enrollment Summaries are based on enrollment on 10/1/2015 as reported in the Period 1 Cumulative Average Daily Membership State Report.

Federal definitions state that any student designated with Hispanic ethnicity will be counted in the Hispanic sub-group, even if the student also has one or more race designations). Non-Hispanic students with multiple race designations are counted in the Multiple Races sub-group. Non-Hispanic students with only one race designation will be counted in that racial sub-group.

PORTLAND PUBLIC SCHOOLS
October 2015 Enrollment by Language and School

School	Detail	Enrollment		English		Spanish		Vietnamese		Chinese		Russian		Somali		Japanese		Other	
		#	%	#	%	#	%	#	%	#	%	#	%	#	%	#	%	#	%
Abernethy	Neighborhood Program	513	506 99%	2 0%	1 0%	2 0%	1 0%											1 0%	
Ainsworth	Neighborhood Program	287	270 94%	1 0%						8 3%								8 3%	
Ainsworth	Spanish Immersion	313	295 94%	17 5%						1 0%									
Ainsworth	Total	600	565 94%	18 3%						9 2%								8 1%	
Alameda	Neighborhood Program	730	720 99%	5 1%	1 0%													3 0%	
Arleta	Neighborhood Program	456	380 83%	24 5%	32 7%	7 2%	2 0%											11 2%	
Astor	Neighborhood Program	493	451 91%	25 5%									2 0%	1 0%				14 3%	
Atkinson	Neighborhood Program	283	247 87%	5 2%	19 7%	6 2%						1 0%						5 2%	
Atkinson	Spanish Immersion	152	86 57%	66 43%															
Atkinson	Total	435	333 77%	71 16%	19 4%	6 1%						1 0%						5 1%	
Beach	Neighborhood Program	249	199 80%	18 7%	5 2%								4 2%					23 9%	
Beach	Spanish Immersion	382	277 73%	103 27%														2 1%	
Beach	Total	631	476 75%	121 19%	5 1%								4 1%					25 4%	
Beverly Cleary	Neighborhood Program	859	837 97%	3 0%	2 0%	1 0%										1 0%		15 2%	
Boise-Eliot/Humboldt	Neighborhood Program	540	495 92%	22 4%	4 1%													19 4%	
Bridger	Neighborhood Program	225	169 75%	7 3%	18 8%	6 3%	2 1%											23 10%	
Bridger	Spanish Immersion	251	160 64%	88 35%						1 0%								2 1%	
Bridger	Total	476	329 69%	95 20%	18 4%	7 1%	2 0%											25 5%	
Bridlemile	Neighborhood Program	480	437 91%	17 4%						3 1%						1 0%		22 5%	
Buckman	Buckman	481	467 97%	7 1%	2 0%							1 0%						4 1%	
Capitol Hill	Neighborhood Program	437	412 94%	11 3%								1 0%	2 0%					11 3%	
César Chávez	Neighborhood Program	271	163 60%	71 26%	1 0%								14 5%					22 8%	
César Chávez	Spanish Immersion	251	90 36%	154 61%														7 3%	
César Chávez	Total	522	253 48%	225 43%	1 0%								14 3%					29 6%	
Chapman	Neighborhood Program	643	574 89%	8 1%	4 1%	13 2%	4 1%									3 0%		37 6%	
Chief Joseph/Ockley Green	Neighborhood Program	604	546 90%	24 4%	10 2%								5 1%					19 3%	
Creative Science	Creative Science School	476	437 92%	1 0%	5 1%	31 7%												2 0%	
Creston	Neighborhood Program	392	302 77%	35 9%	14 4%	17 4%	3 1%	1 0%										20 5%	
Duniway	Neighborhood Program	494	486 98%									2 0%						6 1%	
Faubion	Neighborhood Program	479	359 75%	98 20%	5 1%							2 0%						15 3%	
Forest Park	Neighborhood Program	449	392 87%	5 1%	4 1%	15 3%	3 1%									6 1%		24 5%	
Glencoe	Neighborhood Program	500	478 96%	8 2%	2 0%	1 0%							4 1%					7 1%	
Grout	Neighborhood Program	376	293 78%	18 5%	6 2%	2 1%	4 1%	15 4%	1 0%									37 10%	
Harrison Park	Neighborhood Program	729	352 48%	85 12%	73 10%	88 12%	17 2%	66 9%										48 7%	
Hayhurst	Neighborhood Program	277	250 90%	9 3%						1 0%	1 0%					1 0%		15 5%	
Hayhurst	Odyssey Program	222	215 97%									1 0%				3 1%		3 1%	
Hayhurst	Total	499	465 93%	9 2%						1 0%	2 0%					4 1%		18 4%	
Irvington	Neighborhood Program	493	467 95%	17 3%	2 0%													7 1%	
James John	Neighborhood Program	381	268 70%	89 23%	1 0%								2 1%					21 6%	
James John	Spanish Immersion	48	20 42%	25 52%														3 6%	
James John	Total	429	288 67%	114 27%	1 0%								2 0%					24 6%	

PORTLAND PUBLIC SCHOOLS
October 2015 Enrollment by Language and School

School	Detail	Enrollment		English		Spanish		Vietnamese		Chinese		Russian		Somali		Japanese		Other	
		#	%	#	%	#	%	#	%	#	%	#	%	#	%	#	%	#	%
Kelly	Neighborhood Program	357	242 68%	54 15%	25 7%	12 3%	4 1%	2 1%										18 5%	
Kelly	Russian Immersion	253	55 22%	10 4%								167 65%						21 8%	
Kelly	Total	610	297 49%	64 10%	25 4%	12 2%						171 28%	2 0%				39 6%		
King	Mandarin Immersion	88	76 86%	8 9%						1 1%								3 3%	
King	Neighborhood Program	312	207 66%	83 27%									5 2%					17 5%	
King	Total	400	283 71%	91 23%						1 0%			5 1%					20 5%	
Laurelhurst	Neighborhood Program	691	680 98%	2 0%	4 1%	2 0%												3 0%	
Lee	Neighborhood Program	456	322 71%	34 7%	73 16%						1 0%	7 2%						19 4%	
Lent	Neighborhood Program	378	212 56%	64 17%	58 15%	11 3%	12 3%	1 0%										20 5%	
Lent	Spanish Immersion	186	60 32%	124 67%	2 1%														
Lent	Total	564	272 48%	188 33%	60 11%	11 2%	12 2%	1 0%										20 4%	
Lewis	Neighborhood Program	382	368 96%	4 1%	3 1%						2 1%							5 1%	
Llewellyn	Neighborhood Program	531	511 96%	11 2%	5 1%													4 1%	
Maplewood	Neighborhood Program	359	350 97%	5 1%								1 0%						3 1%	
Markham	Neighborhood Program	377	251 67%	15 4%				3 1%	7 2%	44 12%	1 0%							56 15%	
Marysville	Neighborhood Program	390	239 61%	44 11%	54 14%	11 3%	1 0%	15 4%	3 1%									23 6%	
Peninsula	Neighborhood Program	374	291 78%	59 16%	4 1%	1 0%												19 5%	
Richmond	Japanese Immersion	629	588 93%	2 0%												31 5%		8 1%	
Rieke	Neighborhood Program	402	392 98%	5 1%	1 0%					1 0%						1 0%		2 0%	
Rigler	Neighborhood Program	137	100 73%	18 13%	6 4%					1 1%	4 3%							8 6%	
Rigler	Spanish Immersion	314	121 39%	187 60%	2 1%												1 0%	3 1%	
Rigler	Total	451	221 49%	205 45%	8 2%					1 0%	4 1%	1 0%						11 2%	
Rosa Parks	Neighborhood Program	329	179 54%	56 17%						5 2%	30 9%							59 18%	
Roseway Heights	Neighborhood Program	640	571 89%	9 1%	47 7%	1 0%												12 2%	
Roseway Heights	Vietnamese Immersion	57	18 32%		39 68%														
Roseway Heights	Total	697	589 85%	9 1%	86 12%	1 0%												12 2%	
Sabin	Neighborhood Program	568	556 98%	8 1%														4 1%	
Scott	Neighborhood Program	291	120 41%	131 45%	8 3%	3 1%	5 2%	17 6%										7 2%	
Scott	Spanish Immersion	182	81 45%	86 47%	1 1%								9 5%					5 3%	
Scott	Total	473	201 42%	217 46%	9 2%	3 1%	5 1%	26 5%										12 3%	
Sitton	Neighborhood Program	296	201 68%	77 26%	1 0%								3 1%					14 5%	
Sitton	Spanish Immersion	94	48 51%	43 46%														3 3%	
Sitton	Total	390	249 64%	120 31%	1 0%								3 1%					17 4%	
Skyline	Neighborhood Program	300	297 99%	2 1%					1 0%										
Stephenson	Neighborhood Program	322	304 94%	2 1%	3 1%	2 1%	1 0%	1 0%								2 1%		7 2%	
Sunnyside Environmental	Sunnyside Environmental	574	564 98%	2 0%	3 1%													4 1%	
Vernon	Neighborhood Program	407	366 90%	27 7%	2 0%								2 0%					10 2%	
Vestal	Neighborhood Program	412	295 72%	31 8%	39 9%	6 1%	2 0%	6 1%										33 8%	
Whitman	Neighborhood Program	271	180 66%	37 14%	23 8%	4 1%	9 3%	2 1%										16 6%	
Winterhaven	Winterhaven	350	340 97%	1 0%	1 0%	1 0%										1 0%		6 2%	

PORTLAND PUBLIC SCHOOLS
October 2015 Enrollment by Language and School

School	Detail	Enrollment		English		Spanish		Vietnamese		Chinese		Russian		Somali		Japanese		Other		
		#	%	#	%	#	%	#	%	#	%	#	%	#	%	#	%	#	%	
Woodlawn	Neighborhood Program	426	323	76%	71	17%	3	1%										27	6%	
Woodmere	Neighborhood Program	312	180	58%	52	17%	36	12%	13	4%	3	1%	5	2%				23	7%	
Woodstock	Mandarin Immersion	321	226	70%					9	3%	83	26%						3	1%	
Woodstock	Neighborhood Program	175	169	97%	2	1%	1	1%										3	2%	
Woodstock	Total	496	395	80%	2	0%	10	2%	83	17%								6	1%	
Total	Total	27159	22183	82%	2434	9%	664	2%	358	1%	266	1%	269	1%	57	0%	924	3%		
Beaumont	Neighborhood Program	496	438	88%	39	8%	8	2%			1	0%	4	1%				6	1%	
Beaumont	Spanish Immersion	75	25	33%	49	65%	1	1%												
Beaumont	Total	571	463	81%	88	15%	9	2%			1	0%	4	1%				6	1%	
da Vinci	DaVinci Arts M.S.	458	452	99%	2	0%	1	0%										3	1%	
George	Neighborhood Program	369	204	55%	94	25%	1	0%			2	1%	13	4%				55	15%	
Gray	Neighborhood Program	566	543	96%	8	1%			1	0%							2	0%	12	2%
Hosford	Mandarin Immersion	126	115	91%						11	9%									
Hosford	Neighborhood Program	514	456	89%	12	2%	2	0%	4	1%	1	0%	4	1%				35	7%	
Hosford	Total	640	571	89%	12	2%	2	0%	15	2%	1	0%	4	1%				35	5%	
Jackson	Neighborhood Program	606	537	89%	16	3%	2	0%	2	0%	4	1%	22	4%	3	0%		20	3%	
Lane	Neighborhood Program	444	262	59%	76	17%	54	12%	9	2%	7	2%	4	1%				32	7%	
Lane	Russian Immersion	37	4	11%	1	3%					29	78%						3	8%	
Lane	Total	481	266	55%	77	16%	54	11%	9	2%	36	7%	4	1%				35	7%	
Mt Tabor	Japanese Immersion	254	236	93%	1	0%										13	5%	4	2%	
Mt Tabor	Neighborhood Program	364	321	88%	9	2%	24	7%	3	1%			2	1%				5	1%	
Mt Tabor	Spanish Immersion	76	39	51%	37	49%														
Mt Tabor	Total	694	596	86%	47	7%	24	3%	3	0%			2	0%	13	2%		9	1%	
Sellwood	Neighborhood Program	560	534	95%	9	2%	2	0%			3	1%					1	0%	11	2%
West Sylvan	Neighborhood Program	840	785	93%	10	1%	2	0%	12	1%	4	0%					2	0%	25	3%
West Sylvan	Spanish Immersion	126	119	94%	6	5%			1	1%										
West Sylvan	Total	966	904	94%	16	2%	2	0%	13	1%	4	0%					2	0%	25	3%
Total	Total	5911	5070	86%	369	6%	97	2%	43	1%	51	1%	49	1%	21	0%	211	4%		

PORTLAND PUBLIC SCHOOLS
October 2015 Enrollment by Language and School

School	Detail	Enrollment		English		Spanish		Vietnamese		Chinese		Russian		Somali		Japanese		Other		
		#	%	#	%	#	%	#	%	#	%	#	%	#	%	#	%	#	%	
Benson	Benson Polytechnic H.S.	902	610	68%	157	17%	69	8%	10	1%	4	0%	8	1%				44	5%	
Benson	Spanish Immersion	12	3	25%	9	75%														
Benson	Total	914	613	67%	166	18%	69	8%	10	1%	4	0%	8	1%				44	5%	
Cleveland	Mandarin Immersion	77	65	84%			1	1%	11	14%										
Cleveland	Neighborhood Program	1523	1359	89%	48	3%	21	1%	11	1%	12	1%	10	1%				62	4%	
Cleveland	Total	1600	1424	89%	48	3%	22	1%	22	1%	12	1%	10	1%				62	4%	
Franklin	Neighborhood Program	1473	1060	72%	136	9%	110	7%	67	5%	12	1%	16	1%				71	5%	
Franklin	Spanish Immersion	97	39	40%	58	60%														
Franklin	Total	1570	1099	70%	194	12%	110	7%	67	4%	12	1%	16	1%				71	5%	
Grant	Japanese Immersion	124	115	93%												5	4%	4	3%	
Grant	Neighborhood Program	1357	1303	96%	26	2%	5	0%	2	0%						2	0%	19	1%	
Grant	Total	1481	1418	96%	26	2%	5	0%	2	0%						7	0%	23	2%	
Jefferson	Neighborhood Program	524	457	87%	37	7%	1	0%	1	0%	6	1%	3	1%	1	0%	1	0%	18	3%
Lincoln	Neighborhood Program	1505	1386	92%	18	1%	5	0%	32	2%	4	0%				4	0%	56	4%	
Lincoln	Spanish Immersion	191	182	95%	9	5%														
Lincoln	Total	1696	1568	92%	27	2%	5	0%	32	2%	4	0%				4	0%	56	3%	
Madison	Neighborhood Program	1101	717	65%	154	14%	98	9%	21	2%	8	1%	39	4%				64	6%	
Madison	Spanish Immersion	33	10	30%	22	67%	1	3%												
Madison	Total	1134	727	64%	176	16%	99	9%	21	2%	8	1%	39	3%				64	6%	
Roosevelt	Neighborhood Program	828	564	68%	154	19%	3	0%					11	1%				96	12%	
Roosevelt	Spanish Immersion	112	15	13%	93	83%												4	4%	
Roosevelt	Total	940	579	62%	247	26%	3	0%					11	1%				100	11%	
Wilson	Neighborhood Program	1324	1183	89%	51	4%	2	0%	2	0%	4	0%	26	2%				56	4%	
Total	Total	11183	9068	81%	972	9%	316	3%	157	1%	50	0%	113	1%	12	0%	494	4%		
ACCESS	Access	346	329	95%	1	0%	7	2%	5	1%					1	0%	3	1%		
Alliance	Alliance H.S. @ Benson Campus	72	52	72%	17	24%			1	1%	1	1%						1	1%	
Alliance	Alliance H.S. @ Meek Campus	106	92	87%	12	11%												2	2%	
Alliance	Total	178	144	81%	29	16%			1	1%	1	1%						3	2%	
Clarendon	Clarendon Regional Early Learning Center	16	16	100%																
Head Start Early Childhood Ed	Head Start Early Childhood Ed	799	480	60%	198	25%	27	3%	51	6%	5	1%	10	1%				28	4%	
Metro. Learning Center	Metro. Learning Center	120	117	98%	1	1%												2	2%	
Metro. Learning Center	Metropolitan Learning Ctr K-8	306	296	97%	4	1%					1	0%			2	1%	3	1%		
Metro. Learning Center	Total	426	413	97%	5	1%					1	0%			2	0%	5	1%		
Portland International Scholars Academy	Portland International Scholars Academy	22			8	36%	3	14%			1	5%	2	9%				8	36%	
Ramona	Ramona Early Learners Academy	1	1	100%																
Reconnection Services	Ed Options Reconnection Center	28	21	75%	3	11%					1	4%	1	4%				2	7%	
Teen Parent Services	Teen Parent Services	1	1	100%																
Total	Total	1817	1405	77%	244	13%	37	2%	57	3%	9	0%	13	1%	3	0%	49	3%		

PORTLAND PUBLIC SCHOOLS
October 2015 Enrollment by Language and School

School	Detail	Enrollment	English		Spanish		Vietnamese		Chinese		Russian		Somali		Japanese		Other	
			#	%	#	%	#	%	#	%	#	%	#	%	#	%	#	%
Depaul Center	De Paul Alternative School	22	20	91%	2	9%												
Mt Scott Park Learning Ctr	Mt Scott Park 6-12 Learning Centers	145	128	88%	16	11%							1	1%				
NAYA Early College Academy	NAYA Early College Academy	70	48	69%	16	23%	1	1%									5	7%
New Avenues	New Avenues	13	13	100%														
Open Meadow	Open Meadow M.S.	41	37	90%	4	10%												
Outside In	Outside In	20	16	80%	3	15%											1	5%
PCC	P.C.C. H.S. Completion	177	165	93%	6	3%											6	3%
PCC	P.C.C. YES!	183	105	57%	41	22%	14	8%	8	4%	1	1%	5	3%			9	5%
PCC	Total	360	270	75%	47	13%	14	4%	8	2%	1	0%	5	1%			15	4%
Rosemary Anderson	Rosemary Anderson H.S.	166	135	81%	26	16%							2	1%			3	2%
Rosemary Anderson	Rosemary Anderson H.S.-New Columbia	49	34	69%	12	24%											3	6%
Rosemary Anderson	Total	215	169	79%	38	18%							2	1%			6	3%
SE Works	SE Works	14	12	86%	1	7%											1	7%
Youth Builders	Portland Youth Builders	32	29	91%	3	9%												
Youth Progress Association	Youth Progress Association	32	30	94%	2	6%												
Total	Total	964	772	80%	132	14%	15	2%	8	1%	1	0%	8	1%			28	3%
C.T.C. Humboldt	C.T.C. Humboldt	53	48	91%	2	4%	1	2%			1	2%	1	2%				
CTC Northeast	C.T.C. Northeast	30	28	93%	1	3%	1	3%										
CTC Southeast	C.T.C. Southeast	63	54	86%	1	2%					1	2%					7	11%
DART Programs	Breakthrough	5	5	100%														
DART Programs	Clinton School	10	10	100%														
DART Programs	Johns Landing School	12	11	92%	1	8%												
DART Programs	Morrison Hand in Hand	12	12	100%														
DART Programs	Nickerson Adt	8	8	100%														
DART Programs	Parry Center	55	55	100%														
DART Programs	Parry Center SCIP	11	11	100%														
DART Programs	SAGE	1	1	100%														
DART Programs	White Shield	10	10	100%														
DART Programs	Wildflowers	11	11	100%														
DART Programs	Total	135	134	99%	1	1%												
Park Academy	Park Academy - SPED	1	1	100%														
PPS Pioneer Programs	Pioneer 5-8 @ Youngson	41	39	95%	1	2%											1	2%
PPS Pioneer Programs	Pioneer Annex 9-12	41	38	93%	2	5%	1	2%										
PPS Pioneer Programs	Pioneer K-6 @ Holladay Center	51	50	98%							1	2%						
PPS Pioneer Programs	Total	133	127	95%	3	2%	1	1%			1	1%					1	1%
PRAISE	Providence Hospital	7	7	100%														
Serendipity	Serendipity - SPED	2	2	100%														
Special Education	Special Ed KG Transition	26	25	96%													1	4%
Victory Academy - SPED	Victory Academy - SPED	1	1	100%														
Total	Total	451	427	95%	8	2%	3	1%			3	1%	1	0%			9	2%

PORTLAND PUBLIC SCHOOLS
October 2015 Enrollment by Language and School

School	Detail	Enrollment	English		Spanish		Vietnamese		Chinese		Russian		Somali		Japanese		Other	
			#	%	#	%	#	%	#	%	#	%	#	%	#	%	#	%
Arthur Academy	Arthur Academy Charter	171	159	93%	4	2%	5	3%			2	1%					1	1%
Cm2 Opal School	Opal Charter School	88	88	100%														
Emerson School	The Emerson School	144	141	98%	1	1%	1	1%									1	1%
Kairos PDX	KairosPDX	67	67	100%														
Le Monde	Le Monde French Immersion	226	220	97%							2	1%					4	2%
Portland Village School	Portland Village School	416	408	98%	3	1%					1	0%					4	1%
Self Enhancement Inc.	Self Enhancement Inc.	122	120	98%	2	2%												
Trillium	Trillium Public Charter K-12	356	354	99%	1	0%											1	0%
Total	Total	1590	1557	98%	11	1%	6	0%			5	0%					11	1%
Total	Total	49075	40482	82%	4170	8%	1138	2%	623	1%	385	1%	453	1%	93	0%	1726	4%

Notes :

Data source: 1st Period ADM (Average Daily Membership)

The Chinese language column includes Chinese, Chinese - Cantonese, Chinese - Mandarin and Chinese - Other.

The Somali language column includes aggregation of Somali and Maay-Maay.

Portland Public Schools
Free and Reduced-Price Meal Eligibility (2015-16 SY)

School	School Program	Note	Free Meals	Free Meal %	Reduced-Price Meals	Reduced-Price Meals %	Total Free or Reduced	Total Free or Reduced %	Free Meal by Direct Certification	Free Meal by Direct Certification %	PK - 12 Students
Abernethy			51	9.9%	5	1.0%	56	10.9%	41	8.0%	513
Ainsworth	Neighborhood Program		14	4.9%	2	0.7%	16	5.6%	9	3.1%	287
Ainsworth	Spanish Immersion		11	3.5%	4	1.3%	15	4.8%	8	2.6%	313
Ainsworth	Total		25	4.2%	6	1.0%	31	5.2%	17	2.8%	600
Alameda			45	6.2%	5	0.7%	50	6.9%	32	4.4%	730
Arleta			214	46.9%	42	9.2%	256	56.1%	170	37.3%	456
Astor			209	42.4%	52	10.6%	261	52.9%	143	29.0%	493
Atkinson	Neighborhood Program		74	26.2%	25	8.8%	99	35.0%	58	20.5%	283
Atkinson	Spanish Immersion		62	40.8%	4	2.6%	66	43.4%	43	28.3%	152
Atkinson	Total		136	31.3%	29	6.7%	165	37.9%	101	23.2%	435
Beach	Neighborhood Program		169	67.9%	10	4.0%	179	71.9%	148	59.4%	249
Beach	Spanish Immersion		111	29.1%	30	7.9%	141	36.9%	82	21.5%	382
Beach	Total		280	44.4%	40	6.3%	320	50.7%	230	36.5%	631
Beverly Cleary			67	7.8%	5	0.6%	72	8.4%	50	5.8%	859
Boise-Eliot/Humboldt		CEP	540	100.0%			540	100.0%	321	59.4%	540
Bridger	Neighborhood Program		141	62.7%	14	6.2%	155	68.9%	123	54.7%	225
Bridger	Spanish Immersion		87	34.7%	14	5.6%	101	40.2%	70	27.9%	251
Bridger	Total		228	47.9%	28	5.9%	256	53.8%	193	40.6%	476
Bridlemile			62	12.9%	18	3.8%	80	16.7%	45	9.4%	480
Buckman			141	29.3%	13	2.7%	154	32.0%	115	23.9%	481
Capitol Hill			68	15.6%	15	3.4%	83	19.0%	48	11.0%	437
César Chávez	Neighborhood Program	CEP	271	100.0%			271	100.0%	200	73.8%	271
César Chávez	Spanish Immersion	CEP	251	100.0%			251	100.0%	114	45.4%	251
César Chávez	Total	CEP	522	100.0%			522	100.0%	314	60.2%	522
Chapman			138	21.5%	27	4.2%	165	25.7%	113	17.6%	643
Chief Joseph/Ockley Green			265	43.9%	45	7.5%	310	51.3%	219	36.3%	604
Creative Science			94	19.8%	40	8.4%	134	28.2%	65	13.7%	476
Creston			198	50.5%	31	7.9%	229	58.4%	139	35.5%	392
Duniway			38	7.7%	6	1.2%	44	8.9%	32	6.5%	494
Faubion		CEP	479	100.0%			479	100.0%	204	42.6%	479
Forest Park			10	2.2%	3	0.7%	13	2.9%	4	0.9%	449
Glencoe			89	17.8%	21	4.2%	110	22.0%	75	15.0%	500
Grout			193	51.3%	29	7.7%	222	59.0%	175	46.5%	376
Harrison Park		CEP	729	100.0%			729	100.0%	442	60.6%	729
Hayhurst	Neighborhood Program		84	30.3%	7	2.5%	91	32.9%	80	28.9%	277
Hayhurst	Odyssey Program		16	7.2%	3	1.4%	19	8.6%	15	6.8%	222
Hayhurst	Total		100	20.0%	10	2.0%	110	22.0%	95	19.0%	499
Irvington			117	23.7%	17	3.5%	134	27.2%	90	18.3%	493
James John	Neighborhood Program	CEP	381	100.0%			381	100.0%	211	55.4%	381
James John	Spanish Immersion	CEP	48	100.0%			48	100.0%	23	47.9%	48
James John	Total	CEP	429	100.0%			429	100.0%	234	54.6%	429
Kelly	Neighborhood Program	CEP	357	100.0%			357	100.0%	206	57.7%	357
Kelly	Russian Immersion	CEP	253	100.0%			253	100.0%	100	39.5%	253
Kelly	Total	CEP	610	100.0%			610	100.0%	306	50.2%	610

Portland Public Schools
Free and Reduced-Price Meal Eligibility (2015-16 SY)

School	School Program	Note	Free Meals	Free Meal %	Reduced-Price Meals	Reduced-Price Meals %	Total Free or Reduced	Total Free or Reduced %	Free Meal by Direct Certification	Free Meal by Direct Certification %	PK - 12 Students
King	Mandarin Immersion	CEP	88	100.0%			88	100.0%	44	50.0%	88
King	Neighborhood Program	CEP	312	100.0%			312	100.0%	215	68.9%	312
King	Total	CEP	400	100.0%			400	100.0%	259	64.8%	400
Laurelhurst			66	9.6%	9	1.3%	75	10.9%	50	7.2%	691
Lee		CEP	456	100.0%			456	100.0%	243	53.3%	456
Lent	Neighborhood Program	CEP	378	100.0%			378	100.0%	215	56.9%	378
Lent	Spanish Immersion	CEP	186	100.0%			186	100.0%	96	51.6%	186
Lent	Total	CEP	564	100.0%			564	100.0%	311	55.1%	564
Lewis			105	27.5%	15	3.9%	120	31.4%	87	22.8%	382
Llewellyn			72	13.6%	21	4.0%	93	17.5%	51	9.6%	531
Maplewood			63	17.6%	11	3.1%	74	20.6%	53	14.8%	359
Markham			200	53.1%	20	5.3%	220	58.4%	168	44.6%	377
Marysville		CEP	390	100.0%			390	100.0%	199	51.0%	390
Peninsula			195	52.1%	47	12.6%	242	64.7%	146	39.0%	374
Richmond	Japanese Immersion		43	6.8%	19	3.0%	62	9.9%	30	4.8%	629
Rieke			47	11.7%	10	2.5%	57	14.2%	38	9.5%	402
Rigler	Neighborhood Program	CEP	137	100.0%			137	100.0%	88	64.2%	137
Rigler	Spanish Immersion	CEP	314	100.0%			314	100.0%	195	62.1%	314
Rigler	Total	CEP	451	100.0%			451	100.0%	283	62.8%	451
Rosa Parks		CEP	329	100.0%			329	100.0%	259	78.7%	329
Roseway Heights	Neighborhood Program		228	35.6%	43	6.7%	271	42.3%	194	30.3%	640
Roseway Heights	Vietnamese Immersion		31	54.4%	8	14.0%	39	68.4%	19	33.3%	57
Roseway Heights	Total		259	37.2%	51	7.3%	310	44.5%	213	30.6%	697
Sabin			112	19.7%	23	4.1%	135	23.8%	90	15.9%	568
Scott	Neighborhood Program	CEP	291	100.0%			291	100.0%	183	62.9%	291
Scott	Spanish Immersion	CEP	182	100.0%			182	100.0%	87	47.8%	182
Scott	Total	CEP	473	100.0%			473	100.0%	270	57.1%	473
Sitton	Neighborhood Program	CEP	296	100.0%			296	100.0%	184	62.2%	296
Sitton	Spanish Immersion	CEP	94	100.0%			94	100.0%	58	61.7%	94
Sitton	Total	CEP	390	100.0%			390	100.0%	242	62.1%	390
Skyline			48	16.0%	15	5.0%	63	21.0%	34	11.3%	300
Stephenson			17	5.3%	6	1.9%	23	7.1%	11	3.4%	322
Sunnyside Environmental			134	23.3%	25	4.4%	159	27.7%	101	17.6%	574
Vernon			164	40.3%	13	3.2%	177	43.5%	127	31.2%	407
Vestal		CEP	412	100.0%			412	100.0%	217	52.7%	412
Whitman		CEP	271	100.0%			271	100.0%	150	55.4%	271
Winterhaven			28	8.0%	11	3.1%	39	11.1%	13	3.7%	350
Woodlawn		CEP	426	100.0%			426	100.0%	228	53.5%	426
Woodmere		CEP	312	100.0%			312	100.0%	168	53.9%	312
Woodstock	Mandarin Immersion		67	20.9%	15	4.7%	82	25.6%	47	14.6%	321
Woodstock	Neighborhood Program		58	33.1%	13	7.4%	71	40.6%	51	29.1%	175
Woodstock	Total		125	25.2%	28	5.7%	153	30.9%	98	19.8%	496
Elementary Schools Total			12629	46.5%	811	3.0%	13440	49.5%	8152	30.0%	27159

Portland Public Schools
Free and Reduced-Price Meal Eligibility (2015-16 SY)

School	School Program	Note	Free Meals	Free Meal %	Reduced-Price Meals	Reduced-Price Meals %	Total Free or Reduced	Total Free or Reduced %	Free Meal by Direct Certification	Free Meal by Direct Certification %	PK - 12 Students
Beaumont	Neighborhood Program		142	28.6%	23	4.6%	165	33.3%	113	22.8%	496
Beaumont	Spanish Immersion		46	61.3%	8	10.7%	54	72.0%	35	46.7%	75
Beaumont	Total		188	32.9%	31	5.4%	219	38.4%	148	25.9%	571
da Vinci			101	22.1%	19	4.2%	120	26.2%	73	15.9%	458
George		CEP	369	100.0%			369	100.0%	242	65.6%	369
Gray			99	17.5%	14	2.5%	113	20.0%	85	15.0%	566
Hosford	Mandarin Immersion		13	10.3%	3	2.4%	16	12.7%	9	7.1%	126
Hosford	Neighborhood Program		154	30.0%	25	4.9%	179	34.8%	126	24.5%	514
Hosford	Total		167	26.1%	28	4.4%	195	30.5%	135	21.1%	640
Jackson			139	22.9%	25	4.1%	164	27.1%	109	18.0%	606
Lane	Neighborhood Program	CEP	444	100.0%			444	100.0%	236	53.2%	444
Lane	Russian Immersion	CEP	37	100.0%			37	100.0%	19	51.4%	37
Lane	Total	CEP	481	100.0%			481	100.0%	255	53.0%	481
Mt Tabor	Japanese Immersion		15	5.9%	8	3.2%	23	9.1%	10	3.9%	254
Mt Tabor	Neighborhood Program		75	20.6%	21	5.8%	96	26.4%	56	15.4%	364
Mt Tabor	Spanish Immersion		39	51.3%	4	5.3%	43	56.6%	30	39.5%	76
Mt Tabor	Total		129	18.6%	33	4.8%	162	23.3%	96	13.8%	694
Sellwood			92	16.4%	16	2.9%	108	19.3%	71	12.7%	560
West Sylvan	Neighborhood Program		66	7.9%	7	0.8%	73	8.7%	48	5.7%	840
West Sylvan	Spanish Immersion		7	5.6%	2	1.6%	9	7.1%	4	3.2%	126
West Sylvan	Total		73	7.6%	9	0.9%	82	8.5%	52	5.4%	966
Middle Schools Total			1838	31.1%	175	3.0%	2013	34.1%	1266	21.4%	5911
Benson			440	48.1%	85	9.3%	525	57.4%	315	34.5%	914
Cleveland	Mandarin Immersion		6	7.8%	5	6.5%	11	14.3%	2	2.6%	77
Cleveland	Neighborhood Program		344	22.6%	63	4.1%	407	26.7%	265	17.4%	1523
Cleveland	Total		350	21.9%	68	4.3%	418	26.1%	267	16.7%	1600
Franklin	Neighborhood Program		621	42.2%	119	8.1%	740	50.2%	461	31.3%	1473
Franklin	Spanish Immersion		42	43.3%	7	7.2%	49	50.5%	30	30.9%	97
Franklin	Total		663	42.2%	126	8.0%	789	50.3%	491	31.3%	1570
Grant	Japanese Immersion		14	11.3%	3	2.4%	17	13.7%	5	4.0%	124
Grant	Neighborhood Program		242	17.8%	35	2.6%	277	20.4%	179	13.2%	1357
Grant	Total		256	17.3%	38	2.6%	294	19.9%	184	12.4%	1481
Jefferson		CEP	524	100.0%			524	100.0%	233	44.5%	524
Lincoln	Neighborhood Program		144	9.6%	36	2.4%	180	12.0%	106	7.0%	1505
Lincoln	Spanish Immersion		11	5.8%	5	2.6%	16	8.4%	6	3.1%	191
Lincoln	Total		155	9.1%	41	2.4%	196	11.6%	112	6.6%	1696
Madison	Neighborhood Program	CEP	1101	100.0%			1101	100.0%	468	42.5%	1101
Madison	Spanish Immersion	CEP	33	100.0%			33	100.0%	12	36.4%	33
Madison	Total	CEP	1134	100.0%			1134	100.0%	480	42.3%	1134
Roosevelt	Neighborhood Program	CEP	828	100.0%			828	100.0%	388	46.9%	828
Roosevelt	Spanish Immersion	CEP	112	100.0%			112	100.0%	49	43.8%	112
Roosevelt	Total	CEP	940	100.0%			940	100.0%	437	46.5%	940
Wilson			238	18.0%	40	3.0%	278	21.0%	174	13.1%	1324
High Schools Total			4700	42.0%	398	3.6%	5098	45.6%	2693	24.1%	11183

Portland Public Schools
Free and Reduced-Price Meal Eligibility (2015-16 SY)

School	School Program	Note	Free Meals	Free Meal %	Reduced-Price Meals	Reduced-Price Meals %	Total Free or Reduced	Total Free or Reduced %	Free Meal by Direct Certification	Free Meal by Direct Certification %	PK - 12 Students
ACCESS			31	9.0%	7	2.0%	38	11.0%	28	8.1%	346
Alliance	Alliance H.S. @ Benson Campus		26	36.1%	1	1.4%	27	37.5%	23	31.9%	72
Alliance	Alliance H.S. @ Meek Campus	CEP	106	100.0%			106	100.0%	60	56.6%	106
Alliance	Total		132	74.2%	1	0.6%	133	74.7%	83	46.6%	178
Clarendon			8	50.0%	1	6.3%	9	56.3%	8	50.0%	16
Head Start Early Childhood Ed		HEAD	799	100.0%			799	100.0%	473	59.2%	799
Metro. Learning Center	Metro. Learning Center		23	19.2%	7	5.8%	30	25.0%	18	15.0%	120
Metro. Learning Center	Metropolitan Learning Ctr K-8		31	10.1%	16	5.2%	47	15.4%	22	7.2%	306
Metro. Learning Center	Total		54	12.7%	23	5.4%	77	18.1%	40	9.4%	426
Portland International Scholars Academy			19	86.4%	1	4.6%	20	90.9%	10	45.5%	22
Reconnection Services			19	67.9%			19	67.9%	17	60.7%	28
Alternative Programs Total			1062	58.5%	33	1.8%	1095	60.3%	659	36.3%	1817
Depaul Center			5	22.7%			5	22.7%	5	22.7%	22
Mt Scott Park Learning Ctr			67	46.2%	1	0.7%	68	46.9%	65	44.8%	145
NAYA Early College Academy			47	67.1%	2	2.9%	49	70.0%	45	64.3%	70
New Avenues			11	84.6%			11	84.6%	11	84.6%	13
Open Meadow			29	70.7%	1	2.4%	30	73.2%	25	61.0%	41
Outside In			13	65.0%			13	65.0%	13	65.0%	20
PCC	P.C.C. H.S. Completion		42	23.7%	5	2.8%	47	26.6%	41	23.2%	177
PCC	P.C.C. YES!		36	19.7%			36	19.7%	30	16.4%	183
PCC	Total		78	21.7%	5	1.4%	83	23.1%	71	19.7%	360
Rosemary Anderson	Rosemary Anderson H.S.		83	50.0%	3	1.8%	86	51.8%	76	45.8%	166
Rosemary Anderson	Rosemary Anderson H.S.-New Columbia		33	67.4%	1	2.0%	34	69.4%	33	67.4%	49
Rosemary Anderson	Total		116	54.0%	4	1.9%	120	55.8%	109	50.7%	215
SE Works			5	35.7%			5	35.7%	5	35.7%	14
Youth Builders			14	43.8%			14	43.8%	13	40.6%	32
Youth Progress Association			5	15.6%			5	15.6%	5	15.6%	32
Community Based Organizations Total			390	40.5%	13	1.4%	403	41.8%	367	38.1%	964
C.T.C. Humboldt			11	20.8%			11	20.8%	7	13.2%	53
CTC Northeast			14	46.7%	1	3.3%	15	50.0%	5	16.7%	30
CTC Southeast			19	30.2%	1	1.6%	20	31.8%	5	7.9%	63
DART Programs	Total		110	81.5%			110	81.5%	26	19.3%	135
PPS Pioneer Programs	Total	CEP	133	100.0%			133	100.0%	68	51.1%	133
Special Education	Special Education KG Transition		3	11.5%			3	11.5%	3	11.5%	26
Special Services Total			290	64.3%	2	0.4%	292	64.8%	114	25.3%	451

Portland Public Schools
Free and Reduced-Price Meal Eligibility (2015-16 SY)

School	School Program	Note	Free Meals	Free Meal %	Reduced-Price Meals	Reduced-Price Meals %	Total Free or Reduced	Total Free or Reduced %	Free Meal by Direct Certification	Free Meal by Direct Certification %	PK - 12 Students
Arthur Academy			55	32.2%	8	4.7%	63	36.8%	47	27.5%	171
Cm2 Opal School			10	11.4%	1	1.1%	11	12.5%	4	4.6%	88
Emerson School			15	10.4%	1	0.7%	16	11.1%	15	10.4%	144
Kairos PDX			32	47.8%	2	3.0%	34	50.8%	25	37.3%	67
Le Monde			26	11.5%	9	4.0%	35	15.5%	23	10.2%	226
Portland Village School	6-8		24	18.8%	5	3.9%	29	22.7%	21	16.4%	128
Portland Village School	KG - 5		50	17.4%	18	6.3%	68	23.6%	48	16.7%	288
Portland Village School	Total		74	17.8%	23	5.5%	97	23.3%	69	16.6%	416
Self Enhancement Inc.			69	56.6%	1	0.8%	70	57.4%	66	54.1%	122
Trillium	9-12		29	30.9%	5	5.3%	34	36.2%	22	23.4%	94
Trillium	KG - 8		77	29.4%	16	6.1%	93	35.5%	68	26.0%	262
Trillium	Total		106	29.8%	21	5.9%	127	35.7%	90	25.3%	356
Charter Schools Total			387	24.3%	66	4.2%	453	28.5%	339	21.3%	1590
District Total			21296	43.4%	1498	3.1%	22794	46.5%	13590	27.7%	49075

Note:

Enrollment is based upon the enrollment on 10/1/2015 as reported in Period 1 Cumulative Average Daily Membership (ADM) Report.

While school breakfasts and lunches are available to all students at most sites, some students are eligible for either free or reduced-price meals based on family size and income information supplied voluntarily by parents or through data shared by the state with the school district. The federal government provides funds for student breakfasts through the National School Breakfast Program and lunches through the National School Lunch Program.

Free Meal % is the percent of students eligible to receive Free Meals. The criteria is up to 130% of poverty level (\$31,000 for a family of 4), categorical reason (e.g., SNAP, TANF, foster), or a student is at a Community Eligibility Program (CEP) school. CEP offers free meals to all students, including students that would not normally qualify for free meals. This makes Free Meal % not comparable across schools and not comparable for a CEP school over time.

Reduced-Price Meals % is the percent of students eligible to receive Reduced-Price Meals. The criterion is up to 185% of poverty level (\$44,000 for a family of 4) and is based on a paper application. This metric is not comparable across schools, as CEP schools do not collect paper applications, whereas non-CEP schools do.

Free Meal by Direct Certification % is the percent of total students who receive free meals through data shared by the state with the school district. This excludes students eligible for free meals by paper application or students eligible for free meals because they are enrolled in a CEP school but who do not meet income guidelines if they were not at a CEP school. Free Meal by Direct Certification % is comparable across all schools.

The "Head" category in this column references Head Start programming, which by definition receives free meals.